



# Northern Health Region Service Menu

This Service Menu is a guiding document to encourage knowledge of what medical services are available and to improve the referral process.

The Northern Patient Transportation Program thanks all for their contributions and future updates.

(Updated February 19, 2021)



# Table of Contents

Northern Health Region (NHR) Itinerant and Locum Schedule .....	3
NHR Specialist Waiting Times .....	5
NHR Communities Providing Telehealth .....	7
Store & Forward EConsult .....	9
General Surgery .....	10
Obstetrics & Gynecology .....	31
Internal Medicine .....	47
Chronic Pain Service – Pain Clinic.....	56
Otolaryngology – Ears, Nose, Throat (ENT).....	61
Urology .....	63
Rheumatology.....	65
Neurology .....	67
Dermatology <b>ON HOLD DUE TO COVID-19</b> .....	69
Pediatric Medicine .....	71
Pediatric Endocrinology .....	75
Pediatric Nephrology.....	76
Pediatric Cardiology.....	77
Orthopedic Surgery.....	78
Diagnostic Services .....	84
Northern Patient Transportation Program (NPTP) Contact Information.....	90
Index of Specialists & Services .....	91

# Calendar Of Itinerant and Locum Specialists Available in the NHR

\*\*\*does not account for FULL TIME services.

Sun	Mon	Tue	Wed	Thu	Fri	Sat
					1	2
3	4	5	6	7	8	9
10	11	12	13	14	15	16
17	18	19	20	21	22	23
24	25	26	27	28	29	30
31						



**Regional Specialist Calendar  
2020**

SPECIALTY	Dec-20	Jan-21	Feb-21	Mar-21	Apr-21	May-21
<b>GENERAL SURGERY TM</b>	Essery 1-3 Obayan 11-17 Lipson 25-31	TBA 8-14 Lipson 22-29	Rana 5-12 Dale 19-26	Chemos 5-12 Choi 12-19 Rana 26-31	Rana 1-2 Chemos 9-15 TBD 16-22 TBD 30	Rana 1-6 Choi 14-20 Rana 28-31
<b>GENERAL SURGERY TP</b>						
Endoscopy Program - FF	Reimer 8-10	Kinsley 25-29	Foidart 22-26	Vergis 15-19	Steigerwald 26-30	Robertson 17-21
<b>OBS/GYNE TM</b>						
<b>OBS/GYNE TP</b> Dr. Z. Al-Moumen	4-9, 15-22	2-6, 13-20, 29-31	1-3, 9-17, 24-28	1-3, 10-17, 26-31	6-14, 20-28,	6-12, 21-26
<b>OBS/GYNE FF</b> - Dr. Andora Jackson						
<b>ORTHO - TM</b>	Birt 1-3	Hamam 6-8 Birt 18-21	Birt 22-25	Hamam 3-5 Birt 15-18	Birt 19-22	Birt 3-6 (tent.) Hamam 26-28
<b>ORTHO - TP</b>			Hamam 3-5			
<b>ORTHO CAST CLINIC - TP</b> Dr. Jeff Engel		6-8, 13-15 20-22, 27-29	3-5, 10-12 17-19, 24-26	3-5, 10-12 17-19, 24-26, 31	1, 7-9, 14-16, 21-23, 28-30	5-7, 12-14 19-21, 26-28
<b>CHRONIC PAIN CLINIC TP</b> **may be switched to virtual visits Cov-19	Intrater 7-11 Baker 14-18	Intrater 11-15 Baker 25-29	Intrater 8-12	Baker 1-5 Intrater 8-12 Baker 22-26	Intrater 12-16 Baker 26-30	Intrater 10-14 Baker 17-21
<b>NEUROLOGY TM</b> - Dr. Alan Jackson	Jackson 10-11	Jackson 18-20				
<b>RHUEUMATOLOGY TM</b>				Singh 10-12		
<b>DERMATOLOGY TM</b>	On Hold	On Hold	On Hold	On Hold	On Hold	On Hold
<b>UROLOGY TM</b>		Krocjak 25		Krocjak 15-16		
<b>INTERNAL MEDICINE TM</b>			Ramadan 2-24			
<b>INTERNAL MEDICINE FF</b>		Kostyk 20th	TBD	TBD	TBD	TBD
<b>PEDS CARDIOLOGY TM</b>	Buffo -TBD					
<b>PEDS ENDOCRINOLOGY TM</b>						
<b>PEDS NEPHROLOGY TM</b>						
<b>PAEDIATRICS TP</b>						
<b>PAEDIATRICS FF</b>						

\*\*DOES NOT ACCOUNT FOR FULL TIME  
SERVICES AND SPECIALISTS

EDITED BY: LQUEEN - February 11, 2021

Please remember that this schedule does not include or account for our full time specialties. Please refer to the Regional ROTA as needed for further schedules as needed or contact the following clinics:

Northern Consultation Center - Thompson – (204) 677-5314

The Pas 4<sup>th</sup> Floor Clinic – (204) 627-6426 (nurses desk)

Flin Flon Clinic - 3rd Floor FF Hsp. - (204) 687-6130

# Schedule Of Specialty Waiting Times In the NHR



## Northern Health Region – Specialty Services 2020

(TM – Thompson, TP - The Pas, FF – Flin Flon)

Specialty - *Waiting times are an approximation.	TM - NCC	Waiting Time - CLINIC	Waiting Time OR	The Pas - Clinic	Waiting Time - CLINIC	Waiting Time OR	Flin Flon - 3rd FL	Waiting Time - CLINIC	Waiting Time - OR
Please see notes below for things marked with *** stars.	Is Service available		Elective Only	Is Service available		Elective Only	Is Service available		Elective Only
General Surgery	YES	5 MO	TBA	YES	4 MO	2 MO	NO	N/A	N/A
Endoscopy	YES	N/A	TBA	N/A	N/A	N/A	NO	N/A	N/A
Obstetrics & Gynecology	YES	35 MO	TBA	YES	TRI***	3-4 MO	NO	N/A	N/A
Internal Medicine	YES	15 MO	N/A	YES	2 MO	N/A	YES*	2 MO	N/A
Chronic Pain Clinic	YES*	6 MO	N/A	NO	N/A	N/A	NO	N/A	N/A
Otolaryngology – Also available by eConsult	YES	0 MO	TBA	NO	N/A	N/A	NO	N/A	N/A
Urology	YES	1-2 MO	TBD	NO	N/A	N/A	NO	N/A	N/A
Neurology	YES*	7 MO	N/A	NO	N/A	N/A	NO	N/A	N/A
Rheumatology – send all referrals to Wpg Office	YES*	9 MO	N/A	NO	N/A	N/A	NO	N/A	N/A
Dermatology – Also available by eConsult	NO***	N/A	N/A	NO	N/A	N/A	NO	N/A	N/A
Pediatrics	YES	12-16 MO	N/A	YES*	6 MO	N/A	YES*	*SCH	N/A
Pediatric Nephrology – send all referrals to Wpg Office	YES*	0 MO	N/A	NO	N/A	N/A	NO	N/A	N/A
Pediatric Endocrinology – send referrals to Wpg Office	YES*	0 MO	N/A	NO	N/A	N/A	NO	N/A	N/A
Pediatric Cardiology – send referrals to Wpg	YES*	0 MO	N/A	NO	N/A	N/A	NO	N/A	N/A
Orthopedic Surgery – Also available by eConsult	YES*	5 MO	TBA	YES*	3-4MO	3-4 MO	NO	N/A	N/A
<b>Specialties in TM that accept Regional referrals</b> – Chronic Pain Clinic, ENT, Neurology, Rheumatology, Dermatology, Peds Nephrology, Peds Endocrinology, and Peds Cardiology. ***See referral instructions for PEDS sub-specialties. <b>Specialties in TP that accept referrals from FF</b> – Internal Medicine, OBS/GYN, Orthopedic Surgery and Pediatrics <b>Specialties in FF that accept referrals from TP</b> – Endoscopy, Urology and Pediatrics									

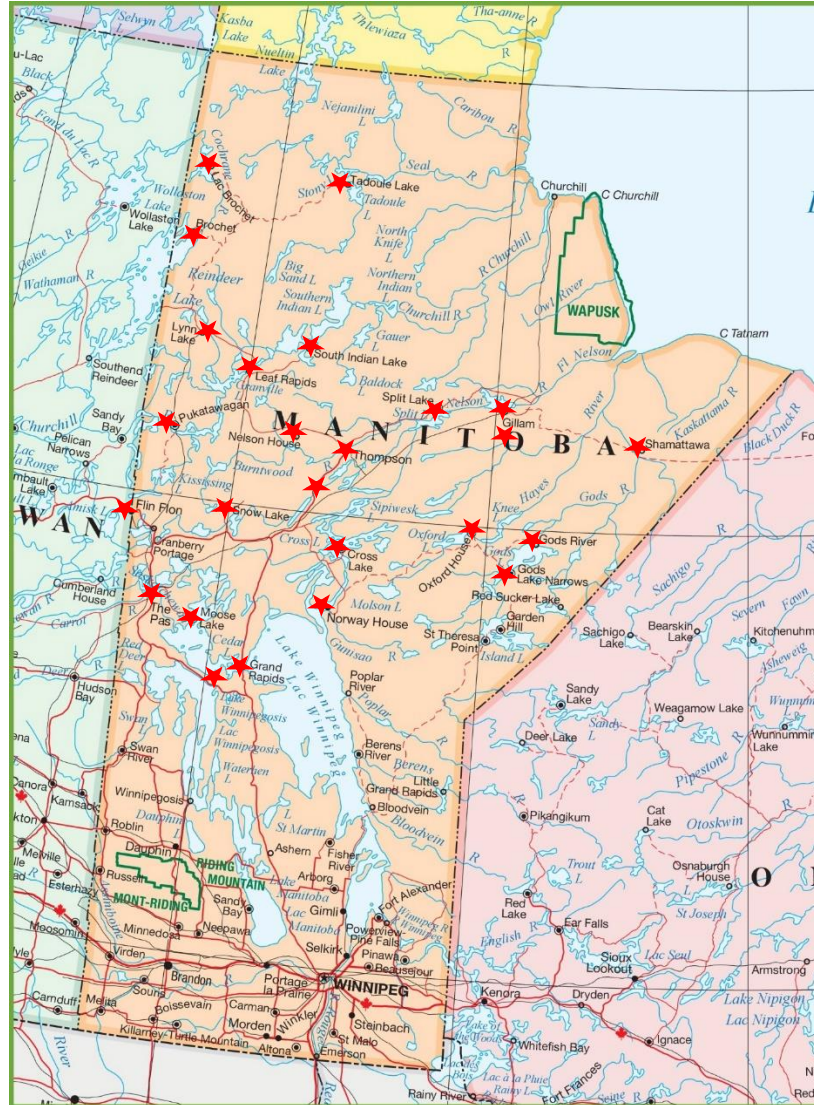
OR – due to COVID-19 states are variable
*Available via <b>Itinerant Specialist</b> - please see scheduled dates
TRI** - wait time depends on provider's <b>triaging</b> of referral
*NV – with <b>next visit of Itinerant Specialist</b>
*SCH = Depends upon the number of referrals before providers <b>schedule</b> a date

\*\*\*Dermatology on hold due to Covid-19 all referrals being sent back to referring provider.

\*\*as of February 11, 2021 – L. Queen, LPN - PCC NPTP

# MB Telehealth Communities Within the NHR

# Where is Telehealth Available In the Northern Health Region?



## Northern Health Region Communities

Lynn Lake  
Leaf Rapids  
Thompson  
Gillam  
Wabowden

Snow Lake  
Flin Flon  
The Pas  
Moose Lake  
Easterville  
Grand Rapids

## NIHB Communities

Brochet  
South Indian Lake  
Lac Brochet  
Tadoule Lake  
Split Lake  
Shamattawa  
Oxford House  
God's River  
God's Lake Narrows  
York Landing  
Cross Lake  
Norway House  
Nelson House  
Pukatawagon



# Telehealth EConsult Services Within Manitoba

## eConsult (Store and Forward)

Video Conferencing eConsult (Store and Forward) is a secure web-based application that allows primary health-care providers to consult with specialists for advice, recommendations, and/or diagnosis about some non-urgent health-related conditions.

### How does eConsult work?

A primary health-care provider determines if a consultation with a specialist is required and creates a referral containing the patient's information and medical history, including any relevant files (i.e. images, test results, medical reports, etc.). The specialist then reviews the information provided and responds within the application. The care remains with the primary health-care provider who will follow-up with the patient based on the specialist's recommendations.

### What are the benefits?

eConsult improves access to specialist services that may not be available in a community or region, connecting people to the services they require to effectively manage their health and well-being without having to leave their home community.

If either the patient or health-care provider feels that eConsult is not appropriate for a specific condition, an in-person appointment will be arranged.

### Is eConsult safe and secure?

Any information about a patient's health that is collected, recorded, stored, transferred, used or disclosed, will be done in accordance with the WRHA policies and The Personal Health Information Act (PHIA).

Click the link below to see what eConsult services are available:

<https://mbtelehealth.ca/files/econsult-referring-guidelines.pdf>

# General Surgery Services In the NHR



<b>R</b> : I see or treat these patients REGULARLY <b>O</b> : I see or treat these patients OCCASIONALLY or in an EMERGENCY ONLY <b>N</b> : I do NOT treat or accept these types of patients.	Performed or Accepted
<b>GENERAL SURGERY - Dr. Alaa Abouhoda – Staff</b>	<b>TP</b>
Trauma Stabilization	O
Laparoscopic Cholecystectomy	R
Laparoscopic Appendectomy	R
Laparoscopic Hemicolectomy	N
Laparoscopic Hernia Repair	N
Colorectal Surgery - Hemorrhoidectomy	R
Endoscopy – Esophagoduodenoscopy(EGD), Colonoscopy, Sigmoidoscopy	N
Colorectal Surgery Colectomies – Extended Hemicolectomy, Hemicolectomy, Sigmoid	O
Colorectal Surgery - Proctoscopy and Anoscopy	N
Colorectal Surgery - Hemorrhoid Banding	N
Breast Surgery – Simple Subcutaneous Lumpectomy	R
Breast Surgery – Duct Excision	R
Breast Surgery – Incision and Drainage (I&D) for Abscess	R
Breast Surgery – Mastectomy (not for Cancer)	O
Surgical Oncology – For Bowel Cancer Only	O
Vascular Surgery – Stripping and Avulsion of varicosities with disconnection of Saphenofemoral Vein	N
Vascular Surgery – Injection of varicose veins with Thromboject	N
Vascular Surgery – Minor Amputations – digits (toes, fingers)	N
Minor Procedures – Lumps, Bumps, Cysts, Lipomas	R
Minor Procedures – Toe Nail Avulsions and Ablations	R
Minor Procedures – Biopsies (Punch, Excisional and Fine Needle) NOT with CT/USS	R
Minor Procedures – Ganglion Excision	N
Minor Procedures - Circumcision (Newborn)	R
Minor Procedures – Circumcision (Adult)	R
Minor Procedures – Electro-cautery or cautery with liquid nitrogen	N
Minor Procedures – Incision and Drainage (I&D) for Abscess	R
Abdominal Surgery – Cholecystectomy	O
Abdominal Surgery – Appendectomy	O
Abdominal Surgery – Laparotomy	O
Abdominal Surgery – Hartmann’s Procedure and Reversal of Same	O

<p><b>R</b>: I see or treat these patients REGULARLY  <b>O</b>: I see or treat these patients OCCASIONALLY or in an EMERGENCY ONLY  <b>N</b>: I do NOT treat or accept these types of patients.</p>	<p>Performed or Accepted</p>
<b>GENERAL SURGERY - Dr. Alaa Abouhoda – Staff</b>	<b>TP</b>
Abdominal Surgery – Ileostomy for Small Bowel Obstruction	O
Abdominal Surgery – Supra-pubic Catheter Insertion or Change of same	O
Abdominal Surgery – PEG Tube Insertion and Change of same	O
Abdominal Surgery – Open Hernia Repair – with or without mesh	R
Abdominal Surgery – Removal of Infected Mesh from Previous Hernia Sites	O
Other Surgery – Perianal fistulotomy	
Referrals – Cholecystitis	R
Referrals – Abdominal Hernias – Inguinal, Incisional, Umbilical or Epigastric	R
Referrals – Rectal Bleeding	R
Referrals – Hemorrhoids	R
Referrals – Anemia	O
Referrals – Varicose Veins	N
Referrals – Breast Lumps	R
Referrals – Lesions and Lumps for Biopsy/Excision	R
Referrals – Previous Surgical Issues	R
Referrals – Colon Cancer Screening	N
Referrals – Abdominal Pain Not Yet Diagnosed (NYD)	R
Referrals – Lymph Node Biopsy	R
Referrals – Phimosis/Balanitis	R
Referrals – Abscess	R
Referrals – Vasectomy Requests	N
Referrals – Warts, Genital or Other	N
Referrals – Hydrocele, Scrotal Lumps	N
Referrals – Complicated Ingrown Toenails	R
Referrals – Will accept consultations by Telehealth	N
Referrals – Will see patients in follow-up by Telehealth	N

<p><b>R</b>: I see or treat these patients REGULARLY  <b>O</b>: I see or treat these patients OCCASIONALLY or in an EMERGENCY ONLY  <b>N</b>: I do NOT treat or accept these types of patients.</p>	<p>Performed or Accepted</p>
<b>GENERAL SURGERY - Dr. Corne Schoeman – Staff</b>	<b>TM</b>
Trauma Stabilization	R
Laparoscopic Cholecystectomy	R
Laparoscopic Appendectomy	R
Laparoscopic Hemicolectomy	R
Laparoscopic Hernia Repair	R
Colorectal Surgery - Hemmorhoidectomy	R
Endoscopy – Esophagoduodenoscopy (EGD), Colonoscopy, Sigmoidoscopy	R
Colorectal Surgery - Colectomies – Extended Hemicolectomy, Hemicolectomy, Sigmoid	R
Colorectal Surgery - Proctoscopy and Anoscopy	R
Colorectal Surgery - Hemorrhoid Banding	R
Breast Surgery – Simple Subcutaneous Lumpectomy	R
Breast Surgery – Duct Excision	R
Breast Surgery – Incision and Drainage (I&D) for Abscess	R
Breast Surgery – Mastectomy (not for Cancer)	R
Surgical Oncology – For Bowel Cancer Only	R
Vascular Surgery – Stripping and Avulsion of varicosities with disconnection of Saphenofemoral Vein	R
Vascular Surgery – Injection of varicose veins with Thromboject	R
Vascular Surgery – Minor Amputations – digits (toes, fingers)	R
Minor Procedures – Lumps, Bumps, Cysts, Lipomas	R
Minor Procedures – Toe Nail Avulsions and Ablations	R
Minor Procedures – Biopsies (Punch, Excisional and Fine Needle) NOT with CT/USS	R
Minor Procedures – Ganglion Excision	R
Minor Procedures - Circumcision (Newborn)	R
Minor Procedures – Circumcision (Adult)	R
Minor Procedures – Electro-cautery or cautery with liquid nitrogen	R
Minor Procedures – Incision and Drainage (I&D) for Abscess	R
Abdominal Surgery – Cholecystectomy	R
Abdominal Surgery – Appendectomy	R
Abdominal Surgery – Laparotomy	R
Abdominal Surgery – Hartmann’s Procedure and Reversal of Same	R

<p><b>R</b>: I see or treat these patients REGULARLY  <b>O</b>: I see or treat these patients OCCASIONALLY or in an EMERGENCY ONLY  <b>N</b>: I do NOT treat or accept these types of patients.</p>	<p>Performed or Accepted</p>
<b>GENERAL SURGERY - Dr. Corne Schoeman – Staff</b>	<b>TM</b>
Abdominal Surgery – Ileostomy for Small Bowel Obstruction	R
Abdominal Surgery – Supra-pubic Catheter Insertion or Change of same	R
Abdominal Surgery – PEG Tube Insertion and Change of same	R
Abdominal Surgery – Open Hernia Repair – with or without mesh	R
Abdominal Surgery – Removal of Infected Mesh from Previous Hernia Sites	R
Other Surgery – Perianal fistulotomy	
Referrals – Cholecystitis	R
Referrals – Abdominal Hernias – Inguinal, Incisional, Umbilical or Epigastric	R
Referrals – Rectal Bleeding	R
Referrals – Hemorrhoids	R
Referrals – Anemia	R
Referrals – Varicose Veins	R
Referrals – Breast Lumps	R
Referrals – Lesions and Lumps for Biopsy/Excision	R
Referrals – Previous Surgical Issues	R
Referrals – Colon Cancer Screening	R
Referrals – Abdominal Pain Not Yet Diagnosed (NYD)	R
Referrals – Lymph Node Biopsy	R
Referrals – Phimosis/Balanitis	R
Referrals – Abscess	R
Referrals – Vasectomy Requests	R
Referrals – Warts, Genital or Other	R
Referrals – Hydrocele, Scrotal Lumps	R
Referrals – Complicated Ingrown Toenails	R
Referrals – Will accept consultations by Telehealth	O*
Referrals – Will see patients in follow-up by Telehealth	R
*Depending on the type of consult must be prior approved	

<p><b>R</b>: I see or treat these patients REGULARLY  <b>O</b>: I see or treat these patients OCCASIONALLY or in an EMERGENCY ONLY  <b>N</b>: I do NOT treat or accept these types of patients.</p>	<p>Performed or Accepted</p>
<p><b>GENERAL SURGERY- Dr. Sarah Steigerwald – LOCUM</b></p>	<p><b>TM/FF</b></p>
Trauma Stabilization	R
Laparoscopic Cholecystectomy	R
Laparoscopic Appendectomy	R
Laparoscopic Hemicolectomy	R
Laparoscopic Hernia Repair	R
Colorectal Surgery - Hemmorhoidectomy	O
Endoscopy – Esophagoduodenoscopy (EGD), Colonoscopy, Sigmoidoscopy	R
Colorectal Surgery - Colectomies – Extended Hemicolectomy, Hemicolectomy, Sigmoid	R
Colorectal Surgery - Proctoscopy and Anoscopy	R
Colorectal Surgery - Hemorrhoid Banding	R
Breast Surgery – Simple Subcutaneous Lumpectomy	O
Breast Surgery – Duct Excision	O
Breast Surgery – Incision and Drainage (I&D) for Abscess	O
Breast Surgery – Mastectomy (not for Cancer)	O
Surgical Oncology – For Bowel Cancer Only	R
Vascular Surgery – Stripping and Avulsion of varicosities with disconnection of Saphenofemoral Vein	N
Vascular Surgery – Injection of varicose veins with Thromboject	N
Vascular Surgery – Minor Amputations – digits (toes, fingers)	N
Minor Procedures – Lumps, Bumps, Cysts, Lipomas	R
Minor Procedures – Toe Nail Avulsions and Ablations	R
Minor Procedures – Biopsies (Punch, Excisional and Fine Needle) NOT with CT/USS	R
Minor Procedures – Ganglion Excision	N
Minor Procedures - Circumcision (Newborn)	N
Minor Procedures – Circumcision (Adult)	N
Minor Procedures – Electro-cautery or cautery with liquid nitrogen	N
Minor Procedures – Incision and Drainage (I&D) for Abscess	R
Abdominal Surgery – Cholecystectomy	R
Abdominal Surgery – Appendectomy	R
Abdominal Surgery – Laparotomy	R
Abdominal Surgery – Hartmann’s Procedure and Reversal of Same	R

<p><b>R</b>: I see or treat these patients REGULARLY  <b>O</b>: I see or treat these patients OCCASIONALLY or in an EMERGENCY ONLY  <b>N</b>: I do NOT treat or accept these types of patients.</p>	<p>Performed or Accepted</p>
<b>GENERAL SURGERY - Dr. Sarah Steigerwald – LOCUM</b>	<b>TM</b>
Abdominal Surgery – Ileostomy for Small Bowel Obstruction	R
Abdominal Surgery – Supra-pubic Catheter Insertion or Change of same	R
Abdominal Surgery – PEG Tube Insertion and Change of same	R
Abdominal Surgery – Open Hernia Repair – with or without mesh	R
Abdominal Surgery – Removal of Infected Mesh from Previous Hernia Sites	R
Other Surgery – Perianal fistulotomy	O
Referrals – Cholecystitis	R
Referrals – Abdominal Hernias – Inguinal, Incisional, Umbilical or Epigastric	R
Referrals – Rectal Bleeding	R
Referrals – Hemorrhoids	R
Referrals – Anemia	R
Referrals – Varicose Veins	N
Referrals – Breast Lumps	O
Referrals – Lesions and Lumps for Biopsy/Excision	R
Referrals – Previous Surgical Issues	R
Referrals – Colon Cancer Screening	R
Referrals – Abdominal Pain Not Yet Diagnosed (NYD)	R
Referrals – Lymph Node Biopsy	O
Referrals – Phimosis/Balanitis	N
Referrals – Abscess	R
Referrals – Vasectomy Requests	N
Referrals – Warts, Genital or Other	N
Referrals – Hydrocele, Scrotal Lumps	N
Referrals – Complicated Ingrown Toenails	R
Referrals – Will accept consultations by Telehealth	O*
Referrals – Will see patients in follow-up by Telehealth	R
*Depending on the type of consult must be prior approved	



<p><b>R</b>: I see or treat these patients REGULARLY  <b>O</b>: I see or treat these patients OCCASIONALLY or in an EMERGENCY ONLY  <b>N</b>: I do NOT treat or accept these types of patients.</p>	<p>Performed or Accepted</p>
<b>GENERAL SURGERY - Dr. Cameron Essery – LOCUM</b>	<b>TM</b>
Trauma Stabilization	O
Laparoscopic Cholecystectomy	R
Laparoscopic Appendectomy	R
Laparoscopic Hemicolectomy	R
Laparoscopic Hernia Repair	O
Colorectal Surgery – Hemorrhoidectomy	O
Endoscopy – Esophagoduodenoscopy (EGD), Colonoscopy, Sigmoidoscopy	R
Colorectal Surgery - Colectomies – Extended Hemicolectomy, Hemicolectomy, Sigmoid	R
Colorectal Surgery - Proctoscopy and Anoscopy	R
Colorectal Surgery - Hemorrhoid Banding	R
Breast Surgery – Simple Subcutaneous Lumpectomy	R
Breast Surgery – Duct Excision	O
Breast Surgery – Incision and Drainage (I&D) for Abscess	R
Breast Surgery – Mastectomy (not for Cancer)	O
Surgical Oncology – For Bowel Cancer Only	O
Vascular Surgery – Stripping and Avulsion of varicosities with disconnection of Saphenofemoral Vein	O
Vascular Surgery – Injection of varicose veins with Thromboject	N
Vascular Surgery – Minor Amputations – digits (toes, fingers)	O
Minor Procedures – Lumps, Bumps, Cysts, Lipomas	R
Minor Procedures – Toe Nail Avulsions and Ablations	O
Minor Procedures – Biopsies (Punch, Excisional and Fine Needle) NOT with CT/USS	O
Minor Procedures – Ganglion Excision	O
Minor Procedures - Circumcision (Newborn)	N
Minor Procedures – Circumcision (Adult)	N
Minor Procedures – Electro-cautery or cautery with liquid nitrogen	N
Minor Procedures – Incision and Drainage (I&D) for Abscess	O
Abdominal Surgery – Cholecystectomy	O
Abdominal Surgery – Appendectomy	O
Abdominal Surgery – Laparotomy	O
Abdominal Surgery – Hartmann’s Procedure and Reversal of Same	R

<p><b>R</b>: I see or treat these patients REGULARLY  <b>O</b>: I see or treat these patients OCCASIONALLY or in an EMERGENCY ONLY  <b>N</b>: I do NOT treat or accept these types of patients.</p>	<p>Performed or Accepted</p>
<b>GENERAL SURGERY - Dr. Cameron Essery – LOCUM</b>	<b>TM</b>
Abdominal Surgery – Ileostomy for Small Bowel Obstruction	O
Abdominal Surgery – Supra-pubic Catheter Insertion or Change of same	O
Abdominal Surgery – PEG Tube Insertion and Change of same	O
Abdominal Surgery – Open Hernia Repair – with or without mesh	R
Abdominal Surgery – Removal of Infected Mesh from Previous Hernia Sites	O
Other Surgery – Perianal fistulotomy	
Referrals – Cholecystitis	R
Referrals – Abdominal Hernias – Inguinal, Incisional, Umbilical or Epigastric	R
Referrals – Rectal Bleeding	R
Referrals – Hemorrhoids	R
Referrals – Anemia	R
Referrals – Varicose Veins	R
Referrals – Breast Lumps	R
Referrals – Lesions and Lumps for Biopsy/Excision	R
Referrals – Previous Surgical Issues	R
Referrals – Colon Cancer Screening	R
Referrals – Abdominal Pain Not Yet Diagnosed (NYD)	R
Referrals – Lymph Node Biopsy	R
Referrals – Phimosis/Balanitis	N
Referrals – Abscess	O
Referrals – Vasectomy Requests	O
Referrals – Warts, Genital or Other	O
Referrals – Hydrocele, Scrotal Lumps	O
Referrals – Complicated Ingrown Toenails	O
Referrals – Will accept consultations by Telehealth	R
Referrals – Will see patients in follow-up by Telehealth	R
*Depending on the type of consult must be prior approved	

<p><b>R</b>: I see or treat these patients REGULARLY  <b>O</b>: I see or treat these patients OCCASIONALLY or in an EMERGENCY ONLY  <b>N</b>: I do NOT treat or accept these types of patients.</p>	<p>Performed or Accepted</p>
<b>GENERAL SURGERY - Dr. Courtney Chernos – LOCUM</b>	<b>TM</b>
Trauma Stabilization	R
Laparoscopic Cholecystectomy	R
Laparoscopic Appendectomy	R
Laparoscopic Hemicolectomy	R
Laparoscopic Hernia Repair	R
Colorectal Surgery – Hemorrhoidectomy	R
Endoscopy – Esophagoduodenoscopy(EGD), Colonoscopy, Sigmoidoscopy	R
Colorectal Surgery Colectomies – Extended Hemicolectomy, Hemicolectomy, Sigmoid	R
Colorectal Surgery - Proctoscopy and Anoscopy	R
Colorectal Surgery - Hemorrhoid Banding	R
Breast Surgery – Simple Subcutaneous Lumpectomy	R
Breast Surgery – Duct Excision	R
Breast Surgery – Incision and Drainage (I&D) for Abscess	R
Breast Surgery – Mastectomy (not for Cancer)	R
Surgical Oncology – For Bowel Cancer Only	R
Vascular Surgery – Stripping and Avulsion of varicosities with disconnection of Saphenofemoral Vein	N
Vascular Surgery – Injection of varicose veins with Thromboject	N
Vascular Surgery – Minor Amputations – digits (toes, fingers)	R
Minor Procedures – Lumps, Bumps, Cysts, Lipomas	R
Minor Procedures – Toe Nail Avulsions and Ablations	R
Minor Procedures – Biopsies (Punch, Excisional and Fine Needle) NOT with CT/USS	R
Minor Procedures – Ganglion Excision	R
Minor Procedures - Circumcision (Newborn)	N
Minor Procedures – Circumcision (Adult)	O
Minor Procedures – Electro-cautery or cautery with liquid nitrogen	R
Minor Procedures – Incision and Drainage (I&D) for Abscess	R
Abdominal Surgery – Cholecystectomy	R
Abdominal Surgery – Appendectomy	R
Abdominal Surgery – Laparotomy	R
Abdominal Surgery – Hartmann’s Procedure and Reversal of Same	R

<p><b>R</b>: I see or treat these patients REGULARLY  <b>O</b>: I see or treat these patients OCCASIONALLY or in an EMERGENCY ONLY  <b>N</b>: I do NOT treat or accept these types of patients.</p>	<p>Performed or Accepted</p>
<b>GENERAL SURGERY - Dr. Courtney Chernos – LOCUM</b>	<b>TM</b>
Abdominal Surgery – Ileostomy for Small Bowel Obstruction	R
Abdominal Surgery – Supra-pubic Catheter Insertion or Change of same	N
Abdominal Surgery – PEG Tube Insertion and Change of same	R
Abdominal Surgery – Open Hernia Repair – with or without mesh	R
Abdominal Surgery – Removal of Infected Mesh from Previous Hernia Sites	R
Other Surgery – Perianal fistulotomy	R
Referrals – Cholecystitis	R
Referrals – Abdominal Hernias – Inguinal, Incisional, Umbilical or Epigastric	R
Referrals – Rectal Bleeding	R
Referrals – Hemorrhoids	R
Referrals – Anemia	R
Referrals – Varicose Veins	N
Referrals – Breast Lumps	R
Referrals – Lesions and Lumps for Biopsy/Excision	R
Referrals – Previous Surgical Issues	R
Referrals – Colon Cancer Screening	R
Referrals – Abdominal Pain Not Yet Diagnosed (NYD)	R
Referrals – Lymph Node Biopsy	R
Referrals – Phimosis/Balanitis	O
Referrals – Abscess	R
Referrals – Vasectomy Requests	R
Referrals – Warts, Genital or Other	R
Referrals – Hydrocele, Scrotal Lumps	R
Referrals – Complicated Ingrown Toenails	R
Referrals – Will accept consultations by Telehealth	R
Referrals – Will see patients in follow-up by Telehealth	R
*Depending on the type of consult must be prior approved	

<p><b>R</b>: I see or treat these patients REGULARLY  <b>O</b>: I see or treat these patients OCCASIONALLY or in an EMERGENCY ONLY  <b>N</b>: I do NOT treat or accept these types of patients.</p>	<p>Performed or Accepted</p>
<b>GENERAL SURGERY - Dr. Mariam Rana – LOCUM</b>	<b>TM</b>
Trauma Stabilization	
Laparoscopic Cholecystectomy	
Laparoscopic Appendectomy	
Laparoscopic Hemicolectomy	
Laparoscopic Hernia Repair	
Colorectal Surgery – Hemorrhoidectomy	
Endoscopy – Esophagoduodenoscopy(EGD), Colonoscopy, Sigmoidoscopy	
Colorectal Surgery - Colectomies – Extended Hemicolectomy, Hemicolectomy, Sigmoid	
Colorectal Surgery - Proctoscopy and Anoscopy	
Colorectal Surgery - Hemorrhoid Banding	
Breast Surgery – Simple Subcutaneous Lumpectomy	
Breast Surgery – Duct Excision	
Breast Surgery – Incision and Drainage (I&D) for Abscess	
Breast Surgery – Mastectomy (not for Cancer)	
Surgical Oncology – For Bowel Cancer Only	
Vascular Surgery – Stripping and Avulsion of varicosities with disconnection of Saphenofemoral Vein	
Vascular Surgery – Injection of varicose veins with Thromboject	
Vascular Surgery – Minor Amputations – digits (toes, fingers)	
Minor Procedures – Lumps, Bumps, Cysts, Lipomas	
Minor Procedures – Toe Nail Avulsions and Ablations	
Minor Procedures – Biopsies (Punch, Excisional and Fine Needle) NOT with CT/USS	
Minor Procedures – Ganglion Excision	
Minor Procedures - Circumcision (Newborn)	
Minor Procedures – Circumcision (Adult)	
Minor Procedures – Electro-cautery or cautery with liquid nitrogen	
Minor Procedures – Incision and Drainage (I&D) for Abscess	
Abdominal Surgery – Cholecystectomy	
Abdominal Surgery – Appendectomy	
Abdominal Surgery – Laparotomy	
Abdominal Surgery – Hartmann’s Procedure and Reversal of Same	

<p><b>R</b>: I see or treat these patients REGULARLY  <b>O</b>: I see or treat these patients OCCASIONALLY or in an EMERGENCY ONLY  <b>N</b>: I do NOT treat or accept these types of patients.</p>	<p>Performed or Accepted</p>
<b>GENERAL SURGERY - Dr. Mariam Rana - LOCUM</b>	<b>TM</b>
Abdominal Surgery – Ileostomy for Small Bowel Obstruction	
Abdominal Surgery – Supra-pubic Catheter Insertion or Change of same	
Abdominal Surgery – PEG Tube Insertion and Change of same	
Abdominal Surgery – Open Hernia Repair – with or without mesh	
Abdominal Surgery – Removal of Infected Mesh from Previous Hernia Sites	
Other Surgery – Perianal fistulotomy	
Referrals – Cholecystitis	
Referrals – Abdominal Hernias – Inguinal, Incisional, Umbilical or Epigastric	
Referrals – Rectal Bleeding	
Referrals – Hemorrhoids	
Referrals – Anemia	
Referrals – Varicose Veins	
Referrals – Breast Lumps	
Referrals – Lesions and Lumps for Biopsy/Excision	
Referrals – Previous Surgical Issues	
Referrals – Colon Cancer Screening	
Referrals – Abdominal Pain Not Yet Diagnosed (NYD)	
Referrals – Lymph Node Biopsy	
Referrals – Phimosis/Balanitis	
Referrals – Abscess	
Referrals – Vasectomy Requests	
Referrals – Warts, Genital or Other	
Referrals – Hydrocele, Scrotal Lumps	
Referrals – Complicated Ingrown Toenails	
Referrals – Will accept consultations by Telehealth	
Referrals – Will see patients in follow-up by Telehealth	

<p><b>R</b>: I see or treat these patients REGULARLY  <b>O</b>: I see or treat these patients OCCASIONALLY or in an EMERGENCY ONLY  <b>N</b>: I do NOT treat or accept these types of patients.</p>	<p>Performed or Accepted</p>
<b>GENERAL SURGERY - Dr. Mark Lipson – LOCUM</b>	<b>TM</b>
Trauma Stabilization	
Laparoscopic Cholecystectomy	
Laparoscopic Appendectomy	
Laparoscopic Hemicolectomy	
Laparoscopic Hernia Repair	
Colorectal Surgery - Hemorrhoidectomy	
Endoscopy – Esophagoduodenoscopy (EGD), Colonoscopy, Sigmoidoscopy	
Colorectal Surgery Colectomies – Extended Hemicolectomy, Hemicolectomy, Sigmoid	
Colorectal Surgery - Proctoscopy and Anoscopy	
Colorectal Surgery - Hemorrhoid Banding	
Breast Surgery – Simple Subcutaneous Lumpectomy	
Breast Surgery – Duct Excision	
Breast Surgery – Incision and Drainage (I&D) for Abscess	
Breast Surgery – Mastectomy (not for Cancer)	
Surgical Oncology – For Bowel Cancer Only	
Vascular Surgery – Stripping and Avulsion of varicosities with disconnection of Saphenofemoral Vein	
Vascular Surgery – Injection of varicose veins with Thromboject	
Vascular Surgery – Minor Amputations – digits (toes, fingers)	
Minor Procedures – Lumps, Bumps, Cysts, Lipomas	
Minor Procedures – Toe Nail Avulsions and Ablations	
Minor Procedures – Biopsies (Punch, Excisional and Fine Needle) NOT with CT/USS	
Minor Procedures – Ganglion Excision	
Minor Procedures - Circumcision (Newborn)	
Minor Procedures – Circumcision (Adult)	
Minor Procedures – Electro-cautery or cautery with liquid nitrogen	
Minor Procedures – Incision and Drainage (I&D) for Abscess	
Abdominal Surgery – Cholecystectomy	
Abdominal Surgery – Appendectomy	
Abdominal Surgery – Laparotomy	
Abdominal Surgery – Hartmann’s Procedure and Reversal of Same	

<p><b>R</b>: I see or treat these patients REGULARLY  <b>O</b>: I see or treat these patients OCCASIONALLY or in an EMERGENCY ONLY  <b>N</b>: I do NOT treat or accept these types of patients.</p>	<p>Performed or Accepted</p>
<b>GENERAL SURGERY - Dr. Mark Lipson - LOCUM</b>	<b>TM</b>
Abdominal Surgery – Ileostomy for Small Bowel Obstruction	
Abdominal Surgery – Supra-pubic Catheter Insertion or Change of same	
Abdominal Surgery – PEG Tube Insertion and Change of same	
Abdominal Surgery – Open Hernia Repair – with or without mesh	
Abdominal Surgery – Removal of Infected Mesh from Previous Hernia Sites	
Other Surgery – Perianal fistulotomy	
Referrals – Cholecystitis	
Referrals – Abdominal Hernias – Inguinal, Incisional, Umbilical or Epigastric	
Referrals – Rectal Bleeding	
Referrals – Hemorrhoids	
Referrals – Anemia	
Referrals – Varicose Veins	
Referrals – Breast Lumps	
Referrals – Lesions and Lumps for Biopsy/Excision	
Referrals – Previous Surgical Issues	
Referrals – Colon Cancer Screening	
Referrals – Abdominal Pain Not Yet Diagnosed (NYD)	
Referrals – Lymph Node Biopsy	
Referrals – Phimosis/Balanitis	
Referrals – Abscess	
Referrals – Vasectomy Requests	
Referrals – Warts, Genital or Other	
Referrals – Hydrocele, Scrotal Lumps	
Referrals – Complicated Ingrown Toenails	
Referrals – Will accept consultations by Telehealth	
Referrals – Will see patients in follow-up by Telehealth	



<p><b>R</b>: I see or treat these patients REGULARLY  <b>O</b>: I see or treat these patients OCCASIONALLY or in an EMERGENCY ONLY  <b>N</b>: I do NOT treat or accept these types of patients.</p>	<p>Performed or Accepted</p>
<b>GENERAL SURGERY - Dr. David Reimer – LOCUM</b>	<b>TM</b>
Trauma Stabilization	
Laparoscopic Cholecystectomy	
Laparoscopic Appendectomy	
Laparoscopic Hemicolectomy	
Laparoscopic Hernia Repair	
Colorectal Surgery - Hemorrhoidectomy	
Endoscopy – Esophagoduodenoscopy (EGD), Colonoscopy, Sigmoidoscopy	
Colorectal Surgery Colectomies – Extended Hemicolectomy, Hemicolectomy, Sigmoid	
Colorectal Surgery - Proctoscopy and Anoscopy	
Colorectal Surgery - Hemorrhoid Banding	
Breast Surgery – Simple Subcutaneous Lumpectomy	
Breast Surgery – Duct Excision	
Breast Surgery – Incision and Drainage (I&D) for Abscess	
Breast Surgery – Mastectomy (not for Cancer)	
Surgical Oncology – For Bowel Cancer Only	
Vascular Surgery – Stripping and Avulsion of varicosities with disconnection of Saphenofemoral Vein	
Vascular Surgery – Injection of varicose veins with Thromboject	
Vascular Surgery – Minor Amputations – digits (toes, fingers)	
Minor Procedures – Lumps, Bumps, Cysts, Lipomas	
Minor Procedures – Toe Nail Avulsions and Ablations	
Minor Procedures – Biopsies (Punch, Excisional and Fine Needle) NOT with CT/USS	
Minor Procedures – Ganglion Excision	
Minor Procedures - Circumcision (Newborn)	
Minor Procedures – Circumcision (Adult)	
Minor Procedures – Electro-cautery or cautery with liquid nitrogen	
Minor Procedures – Incision and Drainage (I&D) for Abscess	
Abdominal Surgery – Cholecystectomy	
Abdominal Surgery – Appendectomy	
Abdominal Surgery – Laparotomy	
Abdominal Surgery – Hartmann’s Procedure and Reversal of Same	

<p><b>R</b>: I see or treat these patients REGULARLY  <b>O</b>: I see or treat these patients OCCASIONALLY or in an EMERGENCY ONLY  <b>N</b>: I do NOT treat or accept these types of patients.</p>	<p>Performed or Accepted</p>
<b>GENERAL SURGERY - Dr. David Reimer - LOCUM</b>	<b>TM</b>
Abdominal Surgery – Ileostomy for Small Bowel Obstruction	
Abdominal Surgery – Supra-pubic Catheter Insertion or Change of same	
Abdominal Surgery – PEG Tube Insertion and Change of same	
Abdominal Surgery – Open Hernia Repair – with or without mesh	
Abdominal Surgery – Removal of Infected Mesh from Previous Hernia Sites	
Other Surgery – Perianal fistulotomy	
Referrals – Cholecystitis	
Referrals – Abdominal Hernias – Inguinal, Incisional, Umbilical or Epigastric	
Referrals – Rectal Bleeding	
Referrals – Hemorrhoids	
Referrals – Anemia	
Referrals – Varicose Veins	
Referrals – Breast Lumps	
Referrals – Lesions and Lumps for Biopsy/Excision	
Referrals – Previous Surgical Issues	
Referrals – Colon Cancer Screening	
Referrals – Abdominal Pain Not Yet Diagnosed (NYD)	
Referrals – Lymph Node Biopsy	
Referrals – Phimosis/Balanitis	
Referrals – Abscess	
Referrals – Vasectomy Requests	
Referrals – Warts, Genital or Other	
Referrals – Hydrocele, Scrotal Lumps	
Referrals – Complicated Ingrown Toenails	
Referrals – Will accept consultations by Telehealth	
Referrals – Will see patients in follow-up by Telehealth	

<p><b>R</b>: I see or treat these patients REGULARLY  <b>O</b>: I see or treat these patients OCCASIONALLY or in an EMERGENCY ONLY  <b>N</b>: I do NOT treat or accept these types of patients.</p>	<p>Performed or Accepted</p>
<b>GENERAL SURGERY - Dr. Ryan Dale – LOCUM</b>	<b>TM</b>
Trauma Stabilization	
Laparoscopic Cholecystectomy	
Laparoscopic Appendectomy	
Laparoscopic Hemicolectomy	
Laparoscopic Hernia Repair	
Colorectal Surgery - Hemorrhoidectomy	
Endoscopy – Esophagoduodenoscopy (EGD), Colonoscopy, Sigmoidoscopy	
Colorectal Surgery Colectomies – Extended Hemicolectomy, Hemicolectomy, Sigmoid	
Colorectal Surgery - Proctoscopy and Anoscopy	
Colorectal Surgery - Hemorrhoid Banding	
Breast Surgery – Simple Subcutaneous Lumpectomy	
Breast Surgery – Duct Excision	
Breast Surgery – Incision and Drainage (I&D) for Abscess	
Breast Surgery – Mastectomy (not for Cancer)	
Surgical Oncology – For Bowel Cancer Only	
Vascular Surgery – Stripping and Avulsion of varicosities with disconnection of Saphenofemoral Vein	
Vascular Surgery – Injection of varicose veins with Thromboject	
Vascular Surgery – Minor Amputations – digits (toes, fingers)	
Minor Procedures – Lumps, Bumps, Cysts, Lipomas	
Minor Procedures – Toe Nail Avulsions and Ablations	
Minor Procedures – Biopsies (Punch, Excisional and Fine Needle) NOT with CT/USS	
Minor Procedures – Ganglion Excision	
Minor Procedures - Circumcision (Newborn)	
Minor Procedures – Circumcision (Adult)	
Minor Procedures – Electro-cautery or cautery with liquid nitrogen	
Minor Procedures – Incision and Drainage (I&D) for Abscess	
Abdominal Surgery – Cholecystectomy	
Abdominal Surgery – Appendectomy	
Abdominal Surgery – Laparotomy	
Abdominal Surgery – Hartmann’s Procedure and Reversal of Same	

<p><b>R</b>: I see or treat these patients REGULARLY  <b>O</b>: I see or treat these patients OCCASIONALLY or in an EMERGENCY ONLY  <b>N</b>: I do NOT treat or accept these types of patients.</p>	<p>Performed or Accepted</p>
<b>GENERAL SURGERY - Dr. Ryan Dale - LOCUM</b>	<b>TM</b>
Abdominal Surgery – Ileostomy for Small Bowel Obstruction	
Abdominal Surgery – Supra-pubic Catheter Insertion or Change of same	
Abdominal Surgery – PEG Tube Insertion and Change of same	
Abdominal Surgery – Open Hernia Repair – with or without mesh	
Abdominal Surgery – Removal of Infected Mesh from Previous Hernia Sites	
Other Surgery – Perianal fistulotomy	
Referrals – Cholecystitis	
Referrals – Abdominal Hernias – Inguinal, Incisional, Umbilical or Epigastric	
Referrals – Rectal Bleeding	
Referrals – Hemorrhoids	
Referrals – Anemia	
Referrals – Varicose Veins	
Referrals – Breast Lumps	
Referrals – Lesions and Lumps for Biopsy/Excision	
Referrals – Previous Surgical Issues	
Referrals – Colon Cancer Screening	
Referrals – Abdominal Pain Not Yet Diagnosed (NYD)	
Referrals – Lymph Node Biopsy	
Referrals – Phimosis/Balanitis	
Referrals – Abscess	
Referrals – Vasectomy Requests	
Referrals – Warts, Genital or Other	
Referrals – Hydrocele, Scrotal Lumps	
Referrals – Complicated Ingrown Toenails	
Referrals – Will accept consultations by Telehealth	
Referrals – Will see patients in follow-up by Telehealth	

<p><b>R</b>: I see or treat these patients REGULARLY  <b>O</b>: I see or treat these patients OCCASIONALLY or in an EMERGENCY ONLY  <b>N</b>: I do NOT treat or accept these types of patients.</p>	<p>Performed or Accepted</p>
<b>GENERAL SURGERY - Dr. Choi – LOCUM</b>	<b>TM</b>
Trauma Stabilization	
Laparoscopic Cholecystectomy	
Laparoscopic Appendectomy	
Laparoscopic Hemicolectomy	
Laparoscopic Hernia Repair	
Colorectal Surgery - Hemorrhoidectomy	
Endoscopy – Esophagoduodenoscopy (EGD), Colonoscopy, Sigmoidoscopy	
Colorectal Surgery Colectomies – Extended Hemicolectomy, Hemicolectomy, Sigmoid	
Colorectal Surgery - Proctoscopy and Anoscopy	
Colorectal Surgery - Hemorrhoid Banding	
Breast Surgery – Simple Subcutaneous Lumpectomy	
Breast Surgery – Duct Excision	
Breast Surgery – Incision and Drainage (I&D) for Abscess	
Breast Surgery – Mastectomy (not for Cancer)	
Surgical Oncology – For Bowel Cancer Only	
Vascular Surgery – Stripping and Avulsion of varicosities with disconnection of Saphenofemoral Vein	
Vascular Surgery – Injection of varicose veins with Thromboject	
Vascular Surgery – Minor Amputations – digits (toes, fingers)	
Minor Procedures – Lumps, Bumps, Cysts, Lipomas	
Minor Procedures – Toe Nail Avulsions and Ablations	
Minor Procedures – Biopsies (Punch, Excisional and Fine Needle) NOT with CT/USS	
Minor Procedures – Ganglion Excision	
Minor Procedures - Circumcision (Newborn)	
Minor Procedures – Circumcision (Adult)	
Minor Procedures – Electro-cautery or cautery with liquid nitrogen	
Minor Procedures – Incision and Drainage (I&D) for Abscess	
Abdominal Surgery – Cholecystectomy	
Abdominal Surgery – Appendectomy	
Abdominal Surgery – Laparotomy	
Abdominal Surgery – Hartmann’s Procedure and Reversal of Same	

<p><b>R</b>: I see or treat these patients REGULARLY  <b>O</b>: I see or treat these patients OCCASIONALLY or in an EMERGENCY ONLY  <b>N</b>: I do NOT treat or accept these types of patients.</p>	<p>Performed or Accepted</p>
<b>GENERAL SURGERY - Dr. Choi - LOCUM</b>	<b>TM</b>
Abdominal Surgery – Ileostomy for Small Bowel Obstruction	
Abdominal Surgery – Supra-pubic Catheter Insertion or Change of same	
Abdominal Surgery – PEG Tube Insertion and Change of same	
Abdominal Surgery – Open Hernia Repair – with or without mesh	
Abdominal Surgery – Removal of Infected Mesh from Previous Hernia Sites	
Other Surgery – Perianal fistulotomy	
Referrals – Cholecystitis	
Referrals – Abdominal Hernias – Inguinal, Incisional, Umbilical or Epigastric	
Referrals – Rectal Bleeding	
Referrals – Hemorrhoids	
Referrals – Anemia	
Referrals – Varicose Veins	
Referrals – Breast Lumps	
Referrals – Lesions and Lumps for Biopsy/Excision	
Referrals – Previous Surgical Issues	
Referrals – Colon Cancer Screening	
Referrals – Abdominal Pain Not Yet Diagnosed (NYD)	
Referrals – Lymph Node Biopsy	
Referrals – Phimosis/Balanitis	
Referrals – Abscess	
Referrals – Vasectomy Requests	
Referrals – Warts, Genital or Other	
Referrals – Hydrocele, Scrotal Lumps	
Referrals – Complicated Ingrown Toenails	
Referrals – Will accept consultations by Telehealth	
Referrals – Will see patients in follow-up by Telehealth	

# Obstetrics & Gynecology Services In the NHR



<p><b>R</b>: I see or treat these patients REGULARLY  <b>O</b>: I see or treat these patients OCCASIONALLY or in an EMERGENCY ONLY  <b>N</b>: I do NOT treat or accept these types of patients.</p>	<p>Performed or Accepted</p>
<p><b>OBS/GYNE - Dr. Andora Jackson - STAFF</b></p>	<p><b>TP</b></p>
Adhesiolysis	R
Cervical Cone Biopsy	N
Cesarean Section	R
Colposcopy	N
Dilation & Curettage (D&C)	R
Endometrial Ablation	R
Endometrial or Uterine Biopsy	R
Fluid Contrast Ultrasound	N
Hysterectomy - Abdominal	R
Hysterectomy - Vaginal	R
Hysterectomy - Laparoscopically	R
Hysteroscopy	R
Myomectomy	R
Oophorectomy	R
Pelvic Laparoscopy	R
Selective Salpingography	N
Uterine Suspension	N
Vaginal Vault Suspension	R
Anterior/Posterior Colporrhaphy	R
Toluene Blue Dye Test	N
Trachelectomy	N
Tubal Ligation	R
Uterine Fibroid Embolization	N
Vulvectomy	O*
Referrals - Abnormal Uterine Bleeding	R
Adenomyosis	R
Adhesions	R
Amenorrhea	R
Bladder Prolapse	R
Cancer	R*
Cervicitis	R



<p><b>R</b>: I see or treat these patients REGULARLY  <b>O</b>: I see or treat these patients OCCASIONALLY or in an EMERGENCY ONLY  <b>N</b>: I do NOT treat or accept these types of patients.</p>	<p>Performed or Accepted</p>
<b>OBS/GYNE - Dr. Andora Jackson - STAFF</b>	<b>TP</b>
Congenital Abnormalities	R
DES Exposure (Diethylstilbestrol)	R
Dysmenorrhea	R
Dyspareunia	R
Dysplasia	R
Ectopic Pregnancy	R
Endometrial Cysts	R
Endometrial Hyperplasia	R
Endometritis	R
Endometriosis	R
Fibroids (Uterine)	R
Genital Warts	R
Hormone Disorders	R
Incontinence	R
Infertility	R
Interstitial Cystitis	R
Menorrhagia	R
Ovarian Cysts	R
Ovarian Hypofunction	R
Ovarian Polyps	R
Ovarian Tumors	R*
Pelvic Congestion Syndrome	R
Pelvic Inflammatory Disease	R
Pelvic Pain	R
Polycystic Ovarian Syndrome	R
Pre-Menstrual Syndrome	R
Premenstrual Dysmorphic Disorder	R
Salpingitis	R
Sexually Transmitted Diseases	R
Toxic Shock Syndrome	R
Urinary Tract Infections	R

<p><b>R</b>: I see or treat these patients REGULARLY  <b>O</b>: I see or treat these patients OCCASIONALLY or in an EMERGENCY ONLY  <b>N</b>: I do NOT treat or accept these types of patients.</p>	<p>Performed or Accepted</p>
<b>OBS/GYNE - Dr. Andora Jackson - STAFF</b>	<b>TP</b>
Uterine Prolapse	R
Vaginitis	R
Vulvitis	R
Vulvodynia	R
Obstetrical Conditions	R
Management of Pre-natal Patients	R
Management of Gestational Diabetes	R
Management of Pre-Gestational Diabetes	R
Management of Hypertension in Pregnancy	R
Pre-Eclampsia	R
Management of Multiples	R
Planned delivery under 36 Gestational Weeks	N
<i>*In collaboration with Cancer Care Manitoba (CCMB)</i>	
Referrals – Will accept consultations by Telehealth	O*
Referrals – Will see patients in follow-up by Telehealth	O*
*depends on type of referral, must be prior approved	

<p><b>R</b>: I see or treat these patients REGULARLY  <b>O</b>: I see or treat these patients OCCASIONALLY or in an EMERGENCY ONLY  <b>N</b>: I do NOT treat or accept these types of patients.</p>	<p>Performed or Accepted</p>
<p><b>OBS/GYNE - Dr. Zakaraia AlMoumen – LOCUM</b></p>	<p><b>TP</b></p>
Adhesiolysis	R
Cervical Cone Biopsy	R
Cesarean Section	R
Colposcopy	R
Dilation & Curettage (D&C)	R
Endometrial Ablation	R
Endometrial or Uterine Biopsy	R
Fluid Contrast Ultrasound	R
Hysterectomy - Abdominal	R
Hysterectomy - Vaginal	R
Hysterectomy - Laparoscopically	R
Hysteroscopy	R
Myomectomy	R
Oophorectomy	R
Pelvic Laparoscopy	R
Selective Salpingography	R
Uterine Suspension	R
Vaginal Vault Suspension	R
Anterior/Posterior Colporrhaphy	R
Toluene Blue Dye Test	R
Trachelectomy	R
Tubal Ligation	R
Uterine Fibroid Embolization	R
Vulvectomy	R
Referrals - Abnormal Uterine Bleeding	R
Adenomyosis	R
Adhesions	R
Amenorrhea	R
Bladder Prolapse	R
Cancer	R*
Cervicitis	R
Congenital Abnormalities	R

<p><b>R</b>: I see or treat these patients REGULARLY  <b>O</b>: I see or treat these patients OCCASIONALLY or in an EMERGENCY ONLY  <b>N</b>: I do NOT treat or accept these types of patients.</p>	<p>Performed or Accepted</p>
<p><b>OBS/GYNE - Dr. Zakaraia AlMoumen – LOCUM</b></p>	<p><b>TP</b></p>
DES Exposure (Diethylstilbestrol)	R
Dysmenorrhea	R
Dyspareunia	R
Dysplasia	R
Ectopic Pregnancy	R
Endometrial Cysts	R
Endometrial Hyperplasia	R
Endometritis	R
Endometriosis	R
Fibroids (Uterine)	R
Genital Warts	R
Hormone Disorders	R
Incontinence	R
Infertility	R
Interstitial Cystitis	R
Menorrhagia	R
Ovarian Cysts	R
Ovarian Hypofunction	R
Ovarian Polyps	R
Ovarian Tumors	R*
Pelvic Congestion Syndrome	R
Pelvic Inflammatory Disease	R
Pelvic Pain	R
Polycystic Ovarian Syndrome	R
Pre-Menstrual Syndrome	R
Premenstrual Dysmorphic Disorder	R
Salpingitis	R
Sexually Transmitted Diseases	R
Toxic Shock Syndrome	R
Urinary Tract Infections	R
Uterine Prolapse	R
Vaginitis	R

<p><b>R</b>: I see or treat these patients REGULARLY  <b>O</b>: I see or treat these patients OCCASIONALLY or in an EMERGENCY ONLY  <b>N</b>: I do NOT treat or accept these types of patients.</p>	<p>Performed or Accepted</p>
<b>OBS/GYNE - Dr. Zakaraia AlMoumen – LOCUM</b>	<b>TP</b>
Vulvitis	R
Vulvodinia	R
Obstetrical Conditions	R
Management of Pre-natal Patients	R
Management of Gestational Diabetes	R
Management of Pre-Gestational Diabetes	R
Management of Hypertension in Pregnancy	R
Pre-Eclampsia	R
Management of Multiples	R
Planned delivery under 36 Gestational Weeks	R
*In collaboration with Cancer Care Manitoba	
Referrals – Will accept consultations by Telehealth**	O**
Referrals – Will see patients in follow-up by Telehealth**	O**

<p><b>R</b>: I see or treat these patients REGULARLY  <b>O</b>: I see or treat these patients OCCASIONALLY or in an EMERGENCY ONLY  <b>N</b>: I do NOT treat or accept these types of patients.</p>	<p>Performed or Accepted</p>
<b>OBS/GYNE - Dr. Lina Azzam - STAFF</b>	<b>TM</b>
Adhesiolysis	R
Cervical Cone Biopsy	R
Cesarean Section	R
Colposcopy	R
Dilation & Curettage (D&C)	R
Endometrial Ablation	R
Endometrial or Uterine Biopsy	R
Fluid Contrast Ultrasound	R
Hysterectomy - Abdominal	R
Hysterectomy - Vaginal	N
Hysterectomy - Laparoscopically	N
Hysteroscopy	R
Myomectomy	R
Oophorectomy	R
Pelvic Laparoscopy	R
Selective Salpingography	R
Uterine Suspension	R
Vaginal Vault Suspension	R
Anterior/Posterior Colporrhaphy	R
Toluene Blue Dye Test	R
Trachelectomy	N
Tubal Ligation	R
Uterine Fibroid Embolization	N
Vulvectomy	R
Referrals - Abnormal Uterine Bleeding	R
Adenomyosis	R
Adhesions	R
Amenorrhea	R
Bladder Prolapse	R
Cancer	R*
Cervicitis	R
Congenital Abnormalities	R

<p><b>R</b>: I see or treat these patients REGULARLY  <b>O</b>: I see or treat these patients OCCASIONALLY or in an EMERGENCY ONLY  <b>N</b>: I do NOT treat or accept these types of patients.</p>	<p>Performed or Accepted</p>
<b>OBS/GYNE - Dr. Lina Azzam - STAFF</b>	<b>TM</b>
DES Exposure (Diethylstilbestrol)	R
Dysmenorrhea	R
Dyspareunia	R
Dysplasia	R
Ectopic Pregnancy	R
Endometrial Cysts	R
Endometrial Hyperplasia	R
Endometritis	R
Endometriosis	R
Fibroids (Uterine)	R
Genital Warts	R
Hormone Disorders	R
Incontinence	R
Infertility	R
Interstitial Cystitis	R
Menorrhagia	R
Ovarian Cysts	R
Ovarian Hypofunction	R
Ovarian Polyps	R
Ovarian Tumors	R*
Pelvic Congestion Syndrome	R
Pelvic Inflammatory Disease	R
Pelvic Pain	R
Polycystic Ovarian Syndrome	R
Pre-Menstrual Syndrome	R
Premenstrual Dysmorphic Disorder	R
Salpingitis	R
Sexually Transmitted Diseases	R
Toxic Shock Syndrome	R
Urinary Tract Infections	R
Uterine Prolapse	R
Vaginitis	R

<p><b>R</b>: I see or treat these patients REGULARLY  <b>O</b>: I see or treat these patients OCCASIONALLY or in an EMERGENCY ONLY  <b>N</b>: I do NOT treat or accept these types of patients.</p>	<p>Performed or Accepted</p>
<b>OBS/GYNE - Dr. Lina Azzam - STAFF</b>	<b>TM</b>
Vulvitis	R
Vulvodinia	R
Obstetrical Conditions	R
Management of Pre-natal Patients	R
Management of Gestational Diabetes	R
Management of Pre-Gestational Diabetes	R
Management of Hypertension in Pregnancy	R
Pre-Eclampsia	R
Management of Multiples	R
Planned delivery under 36 Gestational Weeks	R
*In collaboration with Cancer Care Manitoba	
Referrals – Will accept consultations by Telehealth	O*
Referrals – Will see patients in follow-up by Telehealth	R



<p><b>R</b>: I see or treat these patients REGULARLY  <b>O</b>: I see or treat these patients OCCASIONALLY or in an EMERGENCY ONLY  <b>N</b>: I do NOT treat or accept these types of patients.</p>	<p>Performed or Accepted</p>
<b>OBS/GYNE - Dr. Arjowan Mustafa – STAFF</b>	<b>TM</b>
Adhesiolysis	R
Cervical Cone Biopsy	R
Cesarean Section	R
Colposcopy	R
Dilation & Curettage (D&C)	R
Endometrial Ablation	R
Endometrial or Uterine Biopsy	R
Fluid Contrast Ultrasound	R
Hysterectomy - Abdominal	R
Hysterectomy - Vaginal	N
Hysterectomy - Laparoscopically	N
Hysteroscopy	R
Myomectomy	R
Oophorectomy	R
Pelvic Laparoscopy	R
Selective Salpingography	R
Uterine Suspension	R
Vaginal Vault Suspension	R
Anterior/Posterior Colporrhaphy	R
Toluene Blue Dye Test	R
Trachelectomy	N
Tubal Ligation	R
Uterine Fibroid Embolization	N
Vulvectomy	R
Referrals - Abnormal Uterine Bleeding	R
Adenomyosis	R
Adhesions	R
Amenorrhea	R
Bladder Prolapse	R
Cancer	R*
Cervicitis	R
Congenital Abnormalities	R

<p><b>R</b>: I see or treat these patients REGULARLY  <b>O</b>: I see or treat these patients OCCASIONALLY or in an EMERGENCY ONLY  <b>N</b>: I do NOT treat or accept these types of patients.</p>	<p>Performed or Accepted</p>
<b>OBS/GYNE - Dr. Arjowan Mustafa – STAFF</b>	<b>TM</b>
DES Exposure (Diethylstilbestrol)	R
Dysmenorrhea	R
Dyspareunia	R
Dysplasia	R
Ectopic Pregnancy	R
Endometrial Cysts	R
Endometrial Hyperplasia	R
Endometritis	R
Endometriosis	R
Fibroids (Uterine)	R
Genital Warts	R
Hormone Disorders	R
Incontinence	R
Infertility	R
Interstitial Cystitis	R
Menorrhagia	R
Ovarian Cysts	R
Ovarian Hypofunction	R
Ovarian Polyps	R
Ovarian Tumors	R*
Pelvic Congestion Syndrome	R
Pelvic Inflammatory Disease	R
Pelvic Pain	R
Polycystic Ovarian Syndrome	R
Pre-Menstrual Syndrome	R
Premenstrual Dysmorphic Disorder	R
Salpingitis	R
Sexually Transmitted Diseases	R
Toxic Shock Syndrome	R
Urinary Tract Infections	R
Uterine Prolapse	R
Vaginitis	R

<p><b>R</b>: I see or treat these patients REGULARLY  <b>O</b>: I see or treat these patients OCCASIONALLY or in an EMERGENCY ONLY  <b>N</b>: I do NOT treat or accept these types of patients.</p>	<p>Performed or Accepted</p>
<b>OBS/GYNE - Dr. Arjowan Mustafa – STAFF</b>	<b>TM</b>
Vulvitis	R
Vulvodinia	R
Obstetrical Conditions	R
Management of Pre-natal Patients	R
Management of Gestational Diabetes	R
Management of Pre-Gestational Diabetes	R
Management of Hypertension in Pregnancy	R
Pre-Eclampsia	R
Management of Multiples	R
Planned delivery under 36 Gestational Weeks	R
*In collaboration with Cancer Care Manitoba	
Referrals – Will accept consultations by Telehealth	O*
Referrals – Will see patients in follow-up by Telehealth	R

<p><b>R</b>: I see or treat these patients REGULARLY  <b>O</b>: I see or treat these patients OCCASIONALLY or in an EMERGENCY ONLY  <b>N</b>: I do NOT treat or accept these types of patients.</p>	<p>Performed or Accepted</p>
<b>OBS/GYNE - Dr. Hussam Azzam – STAFF</b>	<b>TM</b>
Adhesiolysis	R
Cervical Cone Biopsy	N
Cesarean Section	R
Colposcopy	N
Dilation & Curettage (D&C)	R
Endometrial Ablation	R
Endometrial or Uterine Biopsy	R
Fluid Contrast Ultrasound	R
Hysterectomy - Abdominal	R
Hysterectomy - Vaginal	R
Hysterectomy - Laparoscopically	N
Hysteroscopy	R
Myomectomy	R
Oophorectomy	R
Pelvic Laparoscopy	R
Selective Salpingography	R
Uterine Suspension	R
Vaginal Vault Suspension	R
Anterior/Posterior Colporrhaphy	R
Toluene Blue Dye Test	R
Trachelectomy	N
Tubal Ligation	R
Uterine Fibroid Embolization	N
Vulvectomy	R
Referrals - Abnormal Uterine Bleeding	R
Adenomyosis	R
Adhesions	R
Amenorrhea	R
Bladder Prolapse	R
Cancer	R*
Cervicitis	R
Congenital Abnormalities	R

<p><b>R</b>: I see or treat these patients REGULARLY  <b>O</b>: I see or treat these patients OCCASIONALLY or in an EMERGENCY ONLY  <b>N</b>: I do NOT treat or accept these types of patients.</p>	<p>Performed or Accepted</p>
<b>OBS/GYNE - Dr. Hussam Azzam – STAFF</b>	<b>TM</b>
DES Exposure (Diethylstilbestrol)	R
Dysmenorrhea	R
Dyspareunia	R
Dysplasia	R
Ectopic Pregnancy	R
Endometrial Cysts	R
Endometrial Hyperplasia	R
Endometritis	R
Endometriosis	R
Fibroids (Uterine)	R
Genital Warts	R
Hormone Disorders	R
Incontinence	R
Infertility	R
Interstitial Cystitis	R
Menorrhagia	R
Ovarian Cysts	R
Ovarian Hypofunction	R
Ovarian Polyps	R
Ovarian Tumors	R*
Pelvic Congestion Syndrome	R
Pelvic Inflammatory Disease	R
Pelvic Pain	R
Polycystic Ovarian Syndrome	R
Pre-Menstrual Syndrome	R
Premenstrual Dysmorphic Disorder	R
Salpingitis	R
Sexually Transmitted Diseases	R
Toxic Shock Syndrome	R
Urinary Tract Infections	R
Uterine Prolapse	R
Vaginitis	R

<p><b>R</b>: I see or treat these patients REGULARLY  <b>O</b>: I see or treat these patients OCCASIONALLY or in an EMERGENCY ONLY  <b>N</b>: I do NOT treat or accept these types of patients.</p>	<p>Performed or Accepted</p>
<b>OBS/GYNE - Dr. Hussam Azzam – STAFF</b>	<b>TM</b>
Vulvitis	R
Vulvodynia	R
Obstetrical Conditions	R
Management of Pre-natal Patients	R
Management of Gestational Diabetes	R
Management of Pre-Gestational Diabetes	R
Management of Hypertension in Pregnancy	R
Pre-Eclampsia	R
Management of Multiples	R
Planned delivery under 36 Gestational Weeks	R
Referrals – Will accept consultations by Telehealth ** with prior approval	O**
Referrals – Will see patients in follow-up by Telehealth	R
*In collaboration with Cancer Care Manitoba	

# Internal Medicine Services In the NHR



Internal Medicine – Procedures/Referrals

<p><b>R</b>: I see or treat these patients REGULARLY  <b>O</b>: I see or treat these patients OCCASIONALLY or in an EMERGENCY ONLY  <b>N</b>: I do NOT treat or accept these types of patients.</p>	<p>Performed or Accepted</p>
<b>INTERNAL MEDICINE - Dr. Hisham Tassi – STAFF</b>	<b>TM</b>
Surgeries/Procedures - Interpretations of Electrocardiograms	R
Surgeries/Procedures - Abdominal Paracentesis	R
Surgeries/Procedures - Arthrocentesis and Non-Spinal Joint Injections	O
Surgeries/Procedures - Arterial Puncture	R
Surgeries/Procedures - Insertion and Management of Central Venous Catheters and Arterial Lines	R
Surgeries/Procedures - Cardiac Stress Testing	R
Surgeries/Procedures - Lumbar Puncture	O
Surgeries/Procedures - Thoracentesis and Insertion of Chest Tube	O
Surgeries/Procedures - Cardioversion - Emergent	O
Surgeries/Procedures - Cardioversion - Elective	R
Surgeries/Procedures - Holter/Event Monitor	N
Surgeries/Procedures - Invasive Mechanical Ventilation	O
Surgeries/Procedures - Non-Invasive Mechanical Ventilation	R
Surgeries/Procedures - Participation in a Code Blue Team	O
Surgeries/Procedures - Bone Marrow Biopsy	N
Surgeries/Procedures - Transthoracic Echocardiography	N
Surgeries/Procedures - Simple Skin Biopsy	N
Surgeries/Procedures - Temporary Pacemaker Insertion	N
Surgeries/Procedures - Endoscopy – Esophagoduodenoscopy (EGD) - Colonoscopy - Sigmoidoscopy - Proctoscopy	N
Surgeries/Procedures - Pulmonary Function Studies	R
Surgeries/Procedures - Liver Biopsy	N
Surgeries/Procedures - Procedural Sedation	O
Surgeries/Procedures - Administration of Chemotherapy	N
Referrals - Core Practice - Acute/Chronic and Complex Disease/Disorders	R
Referrals - Core Practice - Cardiovascular System	R
Referrals - Core Practice - Chest Pain Not Yet Diagnosed (NYD)	R
Referrals - Core Practice - Angina	R
Referrals - Core Practice - Hypertension	R
Referrals - Core Practice - Congestive Heart Failure	R
Referrals - Core Practice - Atrial Fibrillation	R



<b>R</b> : I see or treat these patients REGULARLY <b>O</b> : I see or treat these patients OCCASIONALLY or in an EMERGENCY ONLY <b>N</b> : I do NOT treat or accept these types of patients.	Performed or Accepted
<b>INTERNAL MEDICINE - Dr. Hisham Tassi – STAFF</b>	<b>TM</b>
Referrals - Core Practice - Arteriosclerosis	R
Referrals - Core Practice - Atherosclerosis	R
Referrals - Core Practice - Respiratory System	O
Referrals - Core Practice - Chronic Obstructive Pulmonary Disease	O
Referrals - Core Practice - Chronic Bronchitis	O
Referrals - Core Practice - Pulmonary Fibrosis	O
Referrals - Core Practice - Metabolic Disorder	O
Referrals - Core Practice - Musculoskeletal System	N
Referrals - Core Practice - Osteoarthritis	N
Referrals - Core Practice - Neurological System	N
Referrals - Core Practice - Multiple Sclerosis	N
Referrals - Core Practice - Huntington's Disease	N
Referrals - Core Practice - Alzheimer's Disease	N
Referrals - Core Practice - Immunological System	N
Referrals - Core Practice - Systemic Lupus	N
Referrals - Core Practice - Rheumatoid Arthritis	N
Referrals - Core Practice - Autoimmune Hepatitis	N
Referrals - Core Practice - Gastro enteric System	N
Referrals - Core Practice - Crohn's Disease	N
Referrals - Core Practice - Colitis	N
Referrals - Core Practice - Celiac Disease	N
Referrals - Core Practice - Renal System	R
Referrals - Core Practice - Chronic Kidney Disease	R
Referrals - Core Practice - Acute Kidney Disease	R
Referrals - Core Practice - Reproductive System	N
Referrals - Core Practice - Malignancies	N
Referrals - Core Practice - Infectious Disease	N
Referrals - Core Practice - Pregnancy Related Issues	O
Referrals - Core Practice - Allergies	N
Referrals - Core Practice - Hematopoietic System	N
Referrals – Will accept consultations by Telehealth *prearranged cases only	O*
Referrals – Will see patients in follow-up by Telehealth	R

<p><b>R</b>: I see or treat these patients REGULARLY  <b>O</b>: I see or treat these patients OCCASIONALLY or in an EMERGENCY ONLY  <b>N</b>: I do NOT treat or accept these types of patients.</p>	<p>Performed or Accepted</p>
<b>INTERNAL MEDICINE - Dr. Rami Abou-Khamis – STAFF</b>	<b>TM</b>
Surgeries/Procedures - Interpretations of Electrocardiograms	R
Surgeries/Procedures - Abdominal Paracentesis	R
Surgeries/Procedures - Arthrocentesis and Non-Spinal Joint Injections	O
Surgeries/Procedures - Arterial Puncture	R
Surgeries/Procedures - Insertion and Management of Central Venous Catheters and Arterial Lines	R
Surgeries/Procedures - Cardiac Stress Testing	N
Surgeries/Procedures - Lumbar Puncture	O
Surgeries/Procedures - Thoracentesis and Insertion of Chest Tube	O
Surgeries/Procedures - Cardioversion - Emergent	R
Surgeries/Procedures - Cardioversion - Elective	R
Surgeries/Procedures - Holter/Event Monitor	R
Surgeries/Procedures - Invasive Mechanical Ventilation	R
Surgeries/Procedures - Non-Invasive Mechanical Ventilation	R
Surgeries/Procedures - Participation in a Code Blue Team	O
Surgeries/Procedures - Bone Marrow Biopsy	N
Surgeries/Procedures - Transthoracic Echocardiography	O*
Surgeries/Procedures - Simple Skin Biopsy	N
Surgeries/Procedures - Temporary Pacemaker Insertion	N
Surgeries/Procedures - Endoscopy – Esophagoduodenoscopy (EGD) - Colonoscopy - Sigmoidoscopy - Proctoscopy	R
Surgeries/Procedures - Pulmonary Function Studies	R
Surgeries/Procedures - Liver Biopsy	N
Surgeries/Procedures - Procedural Sedation	R
Surgeries/Procedures - Administration of Chemotherapy	N
Referrals - Core Practice - Acute/Chronic and Complex Disease/Disorders	R
Referrals - Core Practice - Cardiovascular System	R
Referrals - Core Practice - Chest Pain Not Yet Diagnosed (NYD)	R
Referrals - Core Practice - Angina	R
Referrals - Core Practice - Hypertension	R
Referrals - Core Practice - Congestive Heart Failure	R
Referrals - Core Practice - Atrial Fibrillation	R

<p><b>R</b>: I see or treat these patients REGULARLY  <b>O</b>: I see or treat these patients OCCASIONALLY or in an EMERGENCY ONLY  <b>N</b>: I do NOT treat or accept these types of patients.</p>	Performed or Accepted
<b>INTERNAL MEDICINE - Dr. Rami Abou-Khamis – STAFF</b>	<b>TM</b>
Referrals - Core Practice - Arteriosclerosis	R
Referrals - Core Practice - Atherosclerosis	R
Referrals - Core Practice - Respiratory System	R
Referrals - Core Practice - Chronic Obstructive Pulmonary Disease	R
Referrals - Core Practice - Chronic Bronchitis	R
Referrals - Core Practice - Pulmonary Fibrosis	O
Referrals - Core Practice – Metabolic Disorder	O
Referrals - Core Practice - Musculoskeletal System	N
Referrals - Core Practice - Osteoarthritis	N
Referrals - Core Practice - Neurological System	N
Referrals - Core Practice - Multiple Sclerosis	N
Referrals - Core Practice - Huntington's Disease	N
Referrals - Core Practice - Alzheimer's Disease	N
Referrals - Core Practice - Immunological System	O
Referrals - Core Practice - Systemic Lupus	O
Referrals - Core Practice - Rheumatoid Arthritis	O
Referrals - Core Practice - Autoimmune Hepatitis	O
Referrals - Core Practice - Gastro enteric System	O
Referrals - Core Practice – Crohn's Disease	O
Referrals - Core Practice - Colitis	O
Referrals - Core Practice - Celiac Disease	O
Referrals - Core Practice - Renal System	O
Referrals - Core Practice - Chronic Kidney Disease	O
Referrals - Core Practice - Acute Kidney Disease	O
Referrals - Core Practice - Reproductive System	N
Referrals - Core Practice - Malignancies	N
Referrals - Core Practice - Infectious Disease	N
Referrals - Core Practice - Pregnancy Related Issues	O
Referrals - Core Practice - Allergies	N
Referrals - Core Practice - Hematopoietic System	O
Referrals – Will accept consultations by Telehealth *prearranged cases only	O*
Referrals – Will see patients in follow-up by Telehealth	R

<b>R</b> : I see or treat these patients REGULARLY <b>O</b> : I see or treat these patients OCCASIONALLY or in an EMERGENCY ONLY <b>N</b> : I do NOT treat or accept these types of patients.	Performed or Accepted
<b>INTERNAL MEDICINE - Dr. A.J. Ramadan – LOCUM</b>	<b>TM</b>
Surgeries/Procedures - Interpretations of Electrocardiograms	R
Surgeries/Procedures - Abdominal Paracentesis	R
Surgeries/Procedures - Arthrocentesis and Non-Spinal Joint Injections	O
Surgeries/Procedures - Arterial Puncture	R
Surgeries/Procedures - Insertion and Management of Central Venous Catheters and Arterial Lines	R
Surgeries/Procedures - Cardiac Stress Testing	R
Surgeries/Procedures - Lumbar Puncture	O
Surgeries/Procedures - Thoracentesis and Insertion of Chest Tube	R
Surgeries/Procedures - Cardioversion - Emergent	R
Surgeries/Procedures - Cardioversion - Elective	R
Surgeries/Procedures - Holter/Event Monitor	O
Surgeries/Procedures - Invasive Mechanical Ventilation	R
Surgeries/Procedures - Non-Invasive Mechanical Ventilation	R
Surgeries/Procedures - Participation in a Code Blue Team	O
Surgeries/Procedures - Bone Marrow Biopsy	R
Surgeries/Procedures - Transthoracic Echocardiography	R
Surgeries/Procedures - Simple Skin Biopsy	N
Surgeries/Procedures - Temporary Pacemaker Insertion	R
Surgeries/Procedures - Endoscopy – Esophagoduodenoscopy (EGD) - Colonoscopy - Sigmoidoscopy - Proctoscopy	N
Surgeries/Procedures - Pulmonary Function Studies	R
Surgeries/Procedures - Liver Biopsy	N
Surgeries/Procedures - Procedural Sedation	N
Surgeries/Procedures - Administration of Chemotherapy	N
Referrals - Core Practice - Acute/Chronic and Complex Disease/Disorders	R
Referrals - Core Practice - Cardiovascular System	R
Referrals - Core Practice - Chest Pain Not Yet Diagnosed (NYD)	R
Referrals - Core Practice - Angina	R
Referrals - Core Practice - Hypertension	R
Referrals - Core Practice - Congestive Heart Failure	R
Referrals - Core Practice - Atrial Fibrillation	R

<p><b>R</b>: I see or treat these patients REGULARLY  <b>O</b>: I see or treat these patients OCCASIONALLY or in an EMERGENCY ONLY  <b>N</b>: I do NOT treat or accept these types of patients.</p>	<p>Performed or Accepted</p>
<b>INTERNAL MEDICINE - Dr. A.J. Ramadan – LOCUM</b>	<b>TM</b>
Referrals - Core Practice - Arteriosclerosis	R
Referrals - Core Practice - Atherosclerosis	R
Referrals - Core Practice - Respiratory System	R
Referrals - Core Practice - Chronic Obstructive Pulmonary Disease	R
Referrals - Core Practice - Chronic Bronchitis	R
Referrals - Core Practice - Pulmonary Fibrosis	R
Referrals - Core Practice - Metabolic Disorder	O
Referrals - Core Practice - Musculoskeletal System	N
Referrals - Core Practice - Osteoarthritis	N
Referrals - Core Practice - Neurological System	N
Referrals - Core Practice - Multiple Sclerosis	N
Referrals - Core Practice - Huntington's Disease	N
Referrals - Core Practice - Alzheimer's Disease	N
Referrals - Core Practice - Immunological System	N
Referrals - Core Practice - Systemic Lupus	N
Referrals - Core Practice - Rheumatoid Arthritis	N
Referrals - Core Practice - Autoimmune Hepatitis	O
Referrals - Core Practice - Gastro enteric System	N
Referrals - Core Practice – Crohn's Disease	N
Referrals - Core Practice - Colitis	N
Referrals - Core Practice - Celiac Disease	N
Referrals - Core Practice - Renal System	R
Referrals - Core Practice - Chronic Kidney Disease	R
Referrals - Core Practice - Acute Kidney Disease	R
Referrals - Core Practice - Reproductive System	N
Referrals - Core Practice - Malignancies	N
Referrals - Core Practice - Infectious Disease	O
Referrals - Core Practice - Pregnancy Related Issues	O
Referrals - Core Practice - Allergies	N
Referrals - Core Practice - Hematopoietic System	O

<b>R</b> : I see or treat these patients REGULARLY <b>O</b> : I see or treat these patients OCCASIONALLY or in an EMERGENCY ONLY <b>N</b> : I do NOT treat or accept these types of patients.	Performed or Accepted
<b>INTERNAL MEDICINE - Dr. Richard Kostyk – STAFF</b>	<b>TP FF</b>
Surgeries/Procedures - Interpretations of Electrocardiograms	R
Surgeries/Procedures - Abdominal Paracentesis	R
Surgeries/Procedures - Arthrocentesis and Non-Spinal Joint Injections	R
Surgeries/Procedures - Arterial Puncture	R
Surgeries/Procedures - Insertion and Management of Central Venous Catheters and Arterial Lines	R
Surgeries/Procedures - Cardiac Stress Testing	R
Surgeries/Procedures - Lumbar Puncture	R
Surgeries/Procedures - Thoracentesis and Insertion of Chest Tube	R
Surgeries/Procedures - Cardioversion - Emergent	R
Surgeries/Procedures - Cardioversion - Elective	R
Surgeries/Procedures - Holter/Event Monitor	R
Surgeries/Procedures - Invasive Mechanical Ventilation	R
Surgeries/Procedures - Non-Invasive Mechanical Ventilation	R
Surgeries/Procedures - Participation in a Code Blue Team	R
Surgeries/Procedures - Bone Marrow Biopsy	R
Surgeries/Procedures - Transthoracic Echocardiography	R
Surgeries/Procedures - Simple Skin Biopsy	R
Surgeries/Procedures - Temporary Pacemaker Insertion	R
Surgeries/Procedures - Endoscopy – Esophagoduodenoscopy (EGD) - Colonoscopy - Sigmoidoscopy - Proctoscopy	N
Surgeries/Procedures - Pulmonary Function Studies	R
Surgeries/Procedures - Liver Biopsy	N
Surgeries/Procedures - Procedural Sedation	R
Surgeries/Procedures - Administration of Chemotherapy	R
Referrals - Core Practice - Acute/Chronic and Complex Disease/Disorders	R
Referrals - Core Practice - Cardiovascular System	R
Referrals - Core Practice - Chest Pain Not Yet Diagnosed (NYD)	R
Referrals - Core Practice - Angina	R
Referrals - Core Practice - Hypertension	R
Referrals - Core Practice - Congestive Heart Failure	R
Referrals - Core Practice - Atrial Fibrillation	R

<b>R</b> : I see or treat these patients REGULARLY <b>O</b> : I see or treat these patients OCCASIONALLY or in an EMERGENCY ONLY <b>N</b> : I do NOT treat or accept these types of patients.	Performed or Accepted
<b>INTERNAL MEDICINE - Dr. Richard Kostyk – STAFF</b>	<b>TP FF</b>
Referrals - Core Practice - Arteriosclerosis	R
Referrals - Core Practice - Atherosclerosis	R
Referrals - Core Practice - Respiratory System	R
Referrals - Core Practice - Chronic Obstructive Pulmonary Disease	R
Referrals - Core Practice - Chronic Bronchitis	R
Referrals - Core Practice - Pulmonary Fibrosis	R
Referrals - Core Practice - Metabolic Disorder	R
Referrals - Core Practice - Musculoskeletal System	R
Referrals - Core Practice - Osteoarthritis	R
Referrals - Core Practice - Neurological System	R
Referrals - Core Practice - Multiple Sclerosis	R
Referrals - Core Practice - Huntington's Disease	R
Referrals - Core Practice - Alzheimer's Disease	R
Referrals - Core Practice - Immunological System	R
Referrals - Core Practice - Systemic Lupus	R
Referrals - Core Practice - Rheumatoid Arthritis	R
Referrals - Core Practice - Autoimmune Hepatitis	R
Referrals - Core Practice - Gastro enteric System	R
Referrals - Core Practice - Crohn's Disease	R
Referrals - Core Practice - Colitis	R
Referrals - Core Practice - Celiac Disease	R
Referrals - Core Practice - Renal System	R
Referrals - Core Practice - Chronic Kidney Disease	R
Referrals - Core Practice - Acute Kidney Disease	R
Referrals - Core Practice - Reproductive System - **endocrine issues of	R
Referrals - Core Practice - Malignancies	R
Referrals - Core Practice - Infectious Disease	R
Referrals - Core Practice - Pregnancy Related Issues	N
Referrals - Core Practice - Allergies	N
Referrals - Core Practice - Hematopoietic System	O
Referrals – Will accept consultations by Telehealth *prearranged cases only	O*
Referrals – Will see patients in follow-up by Telehealth	R

# Chronic Pain Management Services In the NHR





Chronic Pain Service – Pain Clinic

<p><b>R</b>: I see or treat these patients REGULARLY  <b>O</b>: I see or treat these patients OCCASIONALLY or in an EMERGENCY ONLY  <b>N</b>: I do NOT treat or accept these types of patients.</p>	<p>Performed or Accepted</p>
<b>PAIN MANAGEMENT - Dr. Chandran Baker – ITINERANT</b>	<b>TM</b>
Procedural Interventions - Sacroiliac Joint Injections	R
Procedural Interventions - Epidural Steroid Injections	R
Procedural Interventions - Rhizotomy Procedures	R
Procedural Interventions - Pulse Radiofrequency Procedures	R
Procedural Interventions - Segmented Neuromyotherapy	R
Procedural Interventions - Selective Nerve Root Injections	R
Procedural Interventions - Ganglion Impar Blocks	O
Procedural Interventions - Anesthetic Blocks under Ultrasound Guidance/Fluoroscopy (with or without physiotherapy)	R
Referrals & Services - Medical Management	R
Referrals & Services - Medications	R
Referrals & Services - Referrals to other supports: psychiatry, physiotherapy, orthopedics, spinal service.	R
Referrals & Services - Addictions Medicine	N
Referrals & Services - Children under the age of 16	O
Referrals & Services - Acute Pain less than 3 months in duration	N
Referrals & Services - Back Pain	R
Referrals & Services - Chronic Joint Pain	R
Referrals & Services - Myofascial Pain	R
Referrals & Services - Trigger Points	R
Referrals & Services - Neuromuscular Pain	R
Referrals & Services - Neuropathic Pain	R
Referrals & Services - Neck Pain	R
Referrals & Services - Complex Regional Pain Syndrome	R
Referrals & Services - Cancer Pain	O*
Referrals & Services - Fibromyalgia Pain	R
Referrals & Services - Diabetic Neuropathy	R
Referrals & Services - Phantom Pain	R
Referrals & Services - Trauma Pain	R
Referrals & Services - Patients under Service of WCB – (Workmen’s Compensation Board)	R
Referrals & Services - Patients under services of MPI – (Manitoba Public Insurance)	R



<p><b>R</b>: I see or treat these patients REGULARLY  <b>O</b>: I see or treat these patients OCCASIONALLY or in an EMERGENCY ONLY  <b>N</b>: I do NOT treat or accept these types of patients.</p>	<p>Performed or Accepted</p>
<b>PAIN MANAGEMENT - Dr. Howard Intrater – ITINERENT</b>	<b>TM</b>
Procedural Interventions - Sacroiliac Joint Injections	R
Procedural Interventions - Epidural Steroid Injections	R
Procedural Interventions - Rhizotomy Procedures	R
Procedural Interventions - Pulse Radiofrequency Procedures	R
Procedural Interventions - Segmented Neuromyotherapy	R
Procedural Interventions - Selective Nerve Root Injections	R
Procedural Interventions - Ganglion Impar Blocks	O
Procedural Interventions - Anesthetic Blocks under Ultrasound Guidance/Fluoroscopy (with or without physiotherapy)	R
Referrals & Services - Medical Management	R
Referrals & Services - Medications	R
Referrals & Services - Referrals to other supports: psychiatry, physiotherapy, orthopedics, spinal service.	R
Referrals & Services - Addictions Medicine	N
Referrals & Services - Children under the age of 16	O
Referrals & Services - Acute Pain less than 3 months in duration	N
Referrals & Services - Back Pain	R
Referrals & Services - Chronic Joint Pain	R
Referrals & Services - Myofascial Pain	R
Referrals & Services - Trigger Points	R
Referrals & Services - Neuromuscular Pain	R
Referrals & Services - Neuropathic Pain	R
Referrals & Services - Neck Pain	R
Referrals & Services - Complex Regional Pain Syndrome	R
Referrals & Services - Cancer Pain	O*
Referrals & Services - Fibromyalgia Pain	R
Referrals & Services - Diabetic Neuropathy	R
Referrals & Services - Phantom Pain	R
Referrals & Services - Trauma Pain	R
Referrals & Services - Patients under Service of WCB – (Workmen's Compensation Board)	R
Referrals & Services - Patients under services of MPI – (Manitoba Public Insurance)	R
Referrals & Services - Inpatients	R



# Otolaryngology Surgery Services In the NHR



<p><b>R</b>: I see or treat these patients REGULARLY  <b>O</b>: I see or treat these patients OCCASIONALLY or in an EMERGENCY ONLY  <b>N</b>: I do NOT treat or accept these types of patients.</p>	<p>Performed or Accepted</p>
<b>OTOLARYNGOLOGY - Dr. Gabriel Anid – STAFF</b>	<b>TM</b>
Referrals & Services - Sudden Hearing Loss	
Referrals & Services - Tinnitus	
Referrals & Services - Ear Pain	
Referrals & Services - Ear Discharge	
Referrals & Services - Dizziness	
Referrals & Services - Headaches	
Referrals & Services - Otitis Externa	
Referrals & Services - Bell's Palsy	
Referrals & Services - Chronic Ear Aches	
Referrals & Services - Sinusitis	
Referrals & Services - Allergic Rhinitis	
Referrals & Services - Dysphonia	
Referrals & Services - Otitis Media	
Referrals & Services - Meniere's Disease	
Referrals & Services - Nasal Polyps	
Referrals & Services - Lesions to Throat	
Referrals & Services - Lesions to Nose	
Referrals & Services - Chronic Sinus Pain	
Referrals & Services - Chronic Sinus Infection	
Referrals & Services - Epistaxis	
Referrals & Services - Chronic Post Nasal Drip	
Referrals & Services - Snoring with apneic spells	
Referrals & Services - Snoring Without Apneic Spells	
Referrals & Services - Adenoidectomy	
Referrals & Services - Tonsillectomy	
Referrals & Services - Patients under Service of Workmen's Compensation Board (WCB)	
Referrals & Services - Patients under services of Manitoba Public Insurance (MPI)	
Referrals & Services - Inpatients	

# Urologist Services In the NHR



<p><b>R</b>: I see or treat these patients REGULARLY  <b>O</b>: I see or treat these patients OCCASIONALLY or in an EMERGENCY ONLY  <b>N</b>: I do NOT treat or accept these types of patients.</p>	<p>Performed or Accepted</p>
<b>UROLOGY - Dr. Tad Krocjak – ITINERANT</b>	<b>TM</b>
UROLOGY – WILL SEE ANY UROLOGY CONSULTATION REQUEST	R
UROLOGY – KIDNEY STONES	R
UROLOGY – MALIGNANCIES	R
UROLOGY – PEDIATRIC REFERRALS	N
UROLOGY - Cystoscopy	R
Accepts referrals from The Pas and surrounding areas	R
Accepts referrals from Flin Flon and surrounding areas – please state that your patient would like to be seen in Thompson.	R







# Neurologist Services In the NHR



<b>R:</b> I see or treat these patients REGULARLY <b>O:</b> I see or treat these patients OCCASIONALLY or in an EMERGENCY ONLY <b>N:</b> I do NOT treat or accept these types of patients.	Performed or Accepted
<b>NEUROLOGY - Dr. Alan Jackson – ITINERANT</b>	<b>TM</b>
<b>Dr. Jackson is willing to review and see all consult requests within the NHR. If he deems that the consult is not appropriate for the clinic, or should be sent directly to Winnipeg, he will respond to the request and have it returned to the requesting provider.</b>	R
Reviews Paediatric patients	N
Will see an initial consultation by TeleHealth	N
Will see follow-up patients by TeleHealth	R
<b>Cut off for Paediatric Patients is 16 years of age</b>	
Dr. Jackson will respond to questions regarding referrals via email at	
<a href="mailto:ajackson2@nrha.ca">ajackson2@nrha.ca</a> . You can expect a response within 3-4 days.	
Accepts referrals from The Pas and surrounding area **please state that your patient would like to be seen in Thompson	R
Accepts referrals from Flin Flon and surrounding area **please state that your patient would like to be seen in Thompson	R





# Paediatric Medicine & Paediatric Specialty Services In the NHR



<p><b>R</b>: I see or treat these patients REGULARLY  <b>O</b>: I see or treat these patients OCCASIONALLY or in an EMERGENCY ONLY  <b>N</b>: I do NOT treat or accept these types of patients.</p>	<p>Performed or Accepted</p>
<b>PEDIATRIC MEDICINE - Dr. Moyo Adeyemi - STAFF</b>	<b>TM</b>
Pediatric Medicine – will see any type of consultation request and will treat or send on as needed *except surgical consults	R
Pediatric medicine – sedation	N
Pediatric medicine – surgical consultations	N
<p>Pediatrics is the specialty of medical science concerned with the physical, mental, and social health of children from birth to young adulthood. Pediatric care encompasses a broad spectrum of health services ranging from preventive health care to the diagnosis and treatment of acute and chronic diseases.</p> <p>Pediatrics is a discipline that deals with biological, social, and environmental influences on the developing child and with the impact of disease and dysfunction on development.</p>	





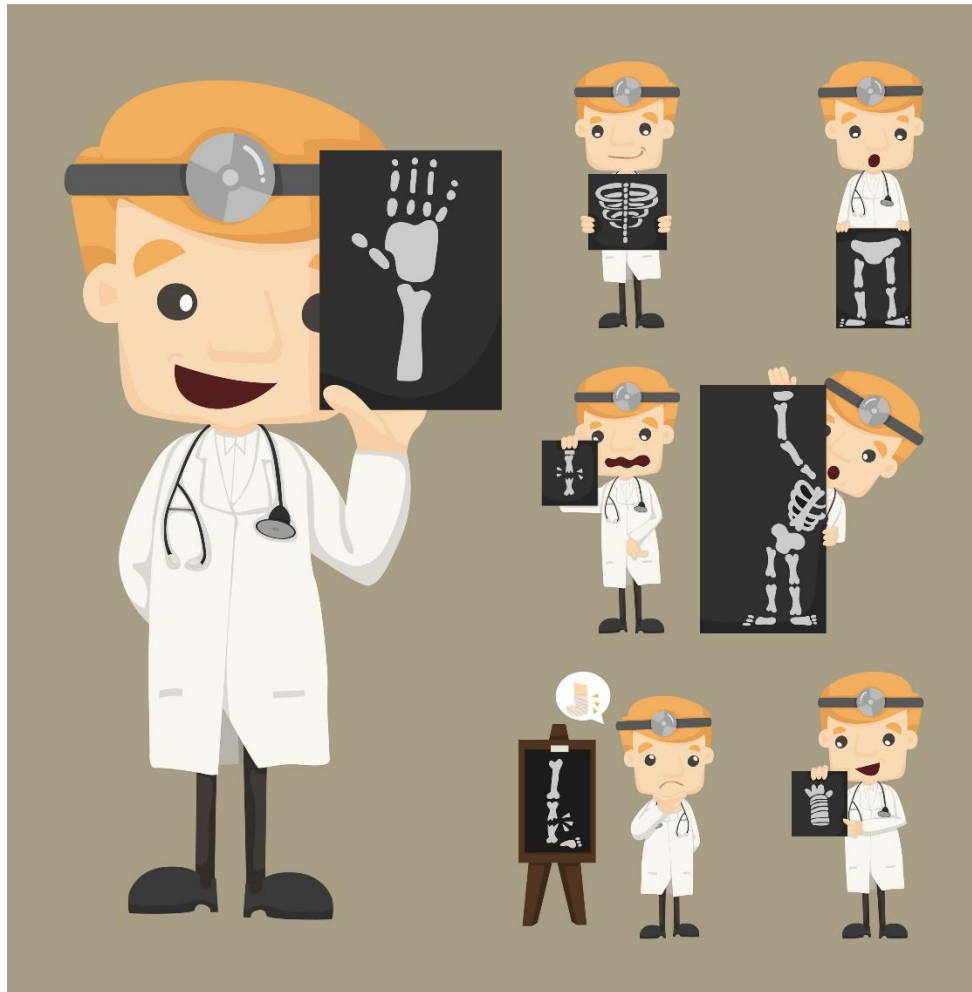








# Orthopedic Surgical Services In the NHR



<p><b>R</b>: I see or treat these patients REGULARLY  <b>O</b>: I see or treat these patients OCCASIONALLY or in an EMERGENCY ONLY  <b>N</b>: I do NOT treat or accept these types of patients.</p>	<p>Performed or Accepted</p>
<b>ORTHOPEDECS – Dr. Alwalid Hamam – ITINERANT</b>	<b>TM TP</b>
<b>Referrals – Knees</b>	
Acute Knee Pain undiagnosed **after x-rays completed standing/weight bearing views	R
Chronic Knee Pain **after x-rays completed standing/weight bearing views ***non-surgical candidate	R
Meniscal Tears	R
Anterior Cruciate Ligament Tear	N
Chronic Knee Pain with diagnosed end stage Osteoarthritis – for consideration of joint replacement.	R
<b>Referrals - Shoulders</b>	
Acute shoulder pain – rotator cuff tear in an active adult	N
Acute shoulder pain – rotator cuff tear in a non-active adult, not surgical candidate	R
Acute on Chronic shoulder pain – multiple dislocations – surgical candidate **patient should be referred directly to WPG	N
Acute on Chronic shoulder pain – multiple dislocations – non-surgical candidate – comorbidities, lifestyle	R
Chronic Shoulder Pain – Massive Rotator Cuff Tear – non-surgical	R
Chronic Shoulder Pain – post surgical intervention	R
Acute Shoulder Pain – post surgical intervention **contact should be made with operating surgeon. <b>Will see to assess emergent issue.</b>	O
Acute Shoulder Pain – Labral Tear	R
Chronic Shoulder Pain – Labral Tear	R
Acute Shoulder Pain – Osteoarthritis	R
Chronic Shoulder Pain – Osteoarthritis – non-surgical	R
Chronic Shoulder Pain – End Stage Osteoarthritis – Surgical candidate	N
Chronic Shoulder Pain – Frozen Shoulder	R
<b>Referrals – Chronic Back Pain</b>	N
<b>Referrals – Hips</b>	
Acute Hip Pain – with x-rays done – hip and AP Pelvis	R
Chronic Hip Pain – end stage Osteoarthritis with x-rays done – hip and AP Pelvis – Non Surgical Candidate	R
Chronic Hip Pain – end stage Osteoarthritis with x-rays done – hip and AP Pelvis – Surgical Candidate	R
Acute Hip Pain – with MRI done – Non surgical issue or candidate	R

<p><b>R</b>: I see or treat these patients REGULARLY  <b>O</b>: I see or treat these patients OCCASIONALLY or in an EMERGENCY ONLY  <b>N</b>: I do NOT treat or accept these types of patients.</p>	<p>Performed or Accepted</p>
<b>ORTHOPEDICS – Dr. Alwalid Hamam – ITINERANT</b>	<b>TM TP</b>
Acute Hip Pain – with MRI – Surgical issue and candidate	N
Acute Hip Pain – with MRI – Surgical issue BUT NOT a candidate	R
Chronic Hip Pain – with MRI – Non-surgical issue or candidate	R
Chronic Hip Pain – with MRI – Surgical Issue and Candidate	O
Chronic Hip Pain – wit MRI – Surgical Issue BUT NOT a candidate	R
<b>Referrals – Foot and Ankle</b>	
Painful hardware post open reduction and internal fixation	R
Claw Toes	R
Hallux Valgus	R
Hallux Rigidus	R
Exostosis in the foot	R
Ganglion in the Foot and Ankle	R
Simple Olecranon Fractures	R
Irrigation and Debridement of wounds	R
Ankle Pain NYD	R
Chronic Ankle Pain	R
<b>Surgical Procedures</b>	
Knee Arthroscopy	R
Hip Arthroscopy	N
Simple Ankle Arthroscopy	R
Complex Ankle Arthroscopy	N
Simple Acute Ankle Fractures – Closed/Open Reduction Internal Fixation	R
Complex Ankle Fractures – Open Reduction and Internal Fixation	N
Complex Olecranon Fractures	N
Hardware Removal	R
Distal Radius Fractures – Open Reduction and Internal Fixation	N
Mild Hallux Valgus Corrections	R
Complex Hallux Valgus Corrections	N
Midfoot Fusions for Osteoarthritis	N
Cheilectomy for Hallux Rigidus	R
Complex Hallux Rigidus including metatarsophalangeal joints fusion	N
External Fixation of Peri-Articular Fractures	N



<b>R</b> : I see or treat these patients REGULARLY <b>O</b> : I see or treat these patients OCCASIONALLY or in an EMERGENCY ONLY <b>N</b> : I do NOT treat or accept these types of patients.	Performed or Accepted
<b>ORTHOPEDICS – Dr. Doug Birt – ITINERANT</b>	<b>TM</b>
<b>Referrals – Knees</b>	
Acute Knee Pain undiagnosed **after x-rays completed standing/weight bearing views	R
Chronic Knee Pain **after x-rays completed standing/weight bearing views ***non-surgical candidate	R
Meniscal Tears	R
Anterior Cruciate Ligament Tear - ***TO ASSESS ONLY	R
Chronic Knee Pain with diagnosed end stage Osteoarthritis – for consideration of joint replacement.	R
<b>Referrals - Shoulders</b>	
Acute shoulder pain – rotator cuff tear in an active adult **ASSESS ONLY	R
Acute shoulder pain – rotator cuff tear in a non-active adult, not surgical candidate	R
Acute on Chronic shoulder pain – multiple dislocations – surgical candidate **patient should be referred directly to WPG	N
Acute on Chronic shoulder pain – multiple dislocations – non-surgical candidate – comorbidities, lifestyle	R
Chronic Shoulder Pain – Massive Rotator Cuff Tear – non-surgical	R
Chronic Shoulder Pain – post surgical intervention	R
Acute Shoulder Pain – post surgical intervention **contact should be made with operating surgeon. <b>Will see to assess emergent issue.</b>	O
Acute Shoulder Pain – Labral Tear	R
Chronic Shoulder Pain – Labral Tear	R
Acute Shoulder Pain – Osteoarthritis	R
Chronic Shoulder Pain – Osteoarthritis – non-surgical	R
Chronic Shoulder Pain – End Stage Osteoarthritis – Surgical candidate	R
Chronic Shoulder Pain – Frozen Shoulder	R
<b>Referrals – Chronic Back Pain</b>	R
<b>Referrals – Hips</b>	
Acute Hip Pain – with x-rays done – hip and AP Pelvis	R
Chronic Hip Pain – end stage Osteoarthritis with x-rays done – hip and AP Pelvis – Non Surgical Candidate	R
Chronic Hip Pain – end stage Osteoarthritis with x-rays done – hip and AP Pelvis – Surgical Candidate	R
Acute Hip Pain – with MRI done – Non surgical issue or candidate	R

<b>R</b> : I see or treat these patients REGULARLY <b>O</b> : I see or treat these patients OCCASIONALLY or in an EMERGENCY ONLY <b>N</b> : I do NOT treat or accept these types of patients.	Performed or Accepted
<b>ORTHOPEDICS – Dr. Doug Birt – ITINERANT</b>	<b>TM</b>
Acute Hip Pain – with MRI – Surgical issue and candidate	N
Acute Hip Pain – with MRI – Surgical issue BUT NOT a candidate	R
Chronic Hip Pain – with MRI – Non-surgical issue or candidate	R
Chronic Hip Pain – with MRI – Surgical Issue and Candidate	R
Chronic Hip Pain – wit MRI – Surgical Issue BUT NOT a candidate	R
<b>Referrals – Foot and Ankle</b>	
Painful hardware post open reduction and internal fixation	R
Claw Toes	R
Hallux Valgus	R
Hallux Rigidus	R
Exostosis in the foot	R
Ganglion in the Foot and Ankle	R
Simple Olecranon Fractures ***SEND TO WPG	N
Irrigation and Debridement of wounds ***SEND TO WPG	N
Ankle Pain NYD	R
Chronic Ankle Pain	R
<b>Surgical Procedures</b>	
Knee Arthroscopy	R
Hip Arthroscopy	N
Simple Ankle Arthroscopy	N
Complex Ankle Arthroscopy	N
Simple Acute Ankle Fractures – Closed/Open Reduction Internal Fixation	N
Complex Ankle Fractures – Open Reduction and Internal Fixation	N
Complex Olecranon Fractures	N
Hardware Removal	R
Distal Radius Fractures – Open Reduction and Internal Fixation	N
Mild Hallux Valgus Corrections	R
Complex Hallux Valgus Corrections	R
Midfoot Fusions for Osteoarthritis	N
Cheilectomy for Hallux Rigidus	R
Complex Hallux Rigidus including metatarsophalangeal joints fusion	N
External Fixation of Peri-Articular Fractures	N



# Diagnostic Services of Manitoba Services Available in the NHR



DIAGNOSTIC SERVICES  
MANITOBA



Shared health  
**Soins communs**  
Manitoba

<b>Diagnostic Services of Manitoba - Services in NRHA - updated December 4, 2019</b>				
<b>Scope</b>	<b>Test</b>	<b>FF</b>	<b>TP</b>	<b>TM</b>
Ultrasound	Obstetrical - 1st Trimester w/EV	YES	YES	YES
Ultrasound	Obstetrical - 1st Trimester wo/EV	YES	YES	YES
Ultrasound	Obstetrical - 2nd and 3rd OBS Complete	YES	YES	YES
Ultrasound	Obstetrical Limited	YES	YES	YES
Ultrasound	Obstetrical - Dating	YES	YES	YES
Ultrasound	Obstetrical - after 28 weeks with BPP (biophysical profile)	NO	YES	YES
Ultrasound	Obstetrical/Pelvis – Trans-labial	NO	YES	YES
Ultrasound	Abdomen - Complete	YES	YES	YES
Ultrasound	Abdomen - Limited	YES	YES	YES
Ultrasound	Abdomen - Aorta	YES	YES	YES
Ultrasound	Abdomen - Appendix	YES	YES	YES
Ultrasound	Abdomen - Renal and Bladder	YES	YES	YES
Ultrasound	Pelvis - Transabdominal only (Male and Female)	YES	YES**	YES
Ultrasound	Pelvis - Transabdominal aid with EV	Yes	YES	YES
Ultrasound	Small Parts - Neck	YES	YES	YES
Ultrasound	Small Parts - Scrotum	YES	YES	YES
Ultrasound	Small Parts - Skin and Subcutaneous Tissue (*may also include breast for abscess)	YES	YES	YES
Ultrasound	Breast - Full Exam	NO	NO	YES
Ultrasound	Small Parts - Thyroid	YES	YES	YES
Ultrasound	Small Parts - Shoulder	NO	NO	YES
Ultrasound	Vascular - Upper Vein Extremity	YES	YES	YES
Ultrasound	Vascular - Lower Vein Extremity	YES	YES	YES
Ultrasound	Duplex Carotid Ultrasound	YES	NO	YES
Ultrasound	Duplex Ultrasound - Varicose Veins	NO	NO	NO
Ultrasound	Duplex Aorta, IVC, Vasculature, Bypass Grafts - AKA - USS of VESSELS	NO	NO	NO
Ultrasound	Chest - Pleural, Chest Wall, Mediastinal Mass	YES	YES	YES
Ultrasound	Musculoskeletal - Shoulder and Elbow	NO	NO	YES
<b>NOTES</b>	** YES FOR FEMALES BUT NOT MALES			

Scope	Test	FF	TP	TM
Radiography	Abdomen	YES	YES	YES
X-Ray	Abdomen For Fetus	YES	YES	YES
X-Ray	Acromioclavicular Joints	YES	YES	YES
X-Ray	Ankle	YES	YES	YES
X-Ray	Calcaneus	YES	YES	YES
X-Ray	Cervical Spine	YES	YES	YES
X-Ray	Chest	YES	YES	YES
X-Ray	Clavicle	YES	YES	YES
X-Ray	Coccyx	YES	YES	YES
X-Ray	Elbow	YES	YES	YES
X-Ray	Facial Bones	YES	YES	YES
X-Ray	Fingers	YES	YES	YES
X-Ray	Foot	YES**	YES	YES
X-Ray	Forearm	YES	YES	YES
X-Ray	Hip	YES	YES	YES
X-Ray	Humerus	YES	YES	YES
X-Ray	Knee	YES	YES	YES
X-Ray	KUB	YES	YES	YES
X-Ray	Lumbar Spine	YES	YES	YES
X-Ray	Mandible	YES	YES	YES
X-Ray	Nasal Bones	YES	YES	YES
X-Ray	Orbits	YES	YES	YES
X-Ray	Paranasal Sinuses	YES	YES	YES
X-Ray	Patella	YES	YES	YES
X-Ray	Pelvis	YES	YES	YES
X-Ray	Ribs	YES	YES	YES
X-Ray	Sacroiliac Joints	YES	YES	YES
X-Ray	Sacrum	YES	YES	YES
X-Ray	Scaphoid	YES	YES	YES
X-Ray	Scapula	YES	YES	YES
X-Ray	Shoulder	YES	YES	YES
X-Ray	Skull for FB (Foreign Body) only	YES	YES	YES
X-Ray	Soft Tissue Neck	YES	YES	YES
X-Ray	Sternum	YES	YES	YES
X-Ray	Survey - Adult Skeletal	YES	YES	YES
X-Ray	Survey - Bone Age	YES	YES	YES
X-Ray	Survey - Pediatric Skeletal	YES	YES	YES
X-Ray	Survey - Scoliosis	YES	YES	YES
X-Ray	Thoracic Spine	YES	YES	YES

X-Ray	Thumb	YES	YES	YES
X-Ray	Tibia Fibula	YES	YES	YES
X-Ray	Toes	YES	YES	YES
X-Ray	Wrist	YES	YES	YES
X-Ray	Zygomatic Arches	YES	YES	YES
<b>NOTES</b>	** Not weight bearing			
<b>Scope</b>	<b>Test</b>	<b>FF</b>	<b>TP</b>	<b>TM</b>
CT	Brain	NO	YES	YES
CT	Sella Turcica	NO	YES	YES
CT	Sagittal Sinus	NO	YES	YES
CT	Circle of Willis (COW)	NO	YES	YES
CT	Facial Bones	NO	YES	YES
CT	Orbits	NO	YES	YES
CT	Sinuses	NO	YES	YES
CT	Neck	NO	YES	YES
CT	Thorax	NO	YES	YES
CT	Pulmonary Embolus	NO	YES	YES
CT	Abdomen	NO	YES	YES
CT	Renal Colic	NO	YES	YES
CT	Pelvis	NO	YES	YES
CT	IVP	NO	YES	YES
CT	Cervical Spine	NO	YES	YES
CT	Thoracic Spine	NO	YES	YES
CT	Lumbar Spine	NO	YES	YES
CT	Sacrum	NO	YES	YES
CT	Musculoskeletal	NO	YES	YES
CT	Angiography	NO	YES	YES
CT	Angiography DVT (Deep Vein Thrombosis)	NO	YES	YES
CT	Urography	NO	YES	YES
CT	Cystography	NO	YES	YES
CT	Enterography	NO	YES	YES
CT	Blue Print Studies needed for surgical procedure	NO	YES	NO
CT	Gated Studies For The Heart	NO	NO	NO
CT	Perfusion Studies for the Brain (Stroke issues)	NO	NO	NO
CT	Children Under 6 Years of Age	NO	NO	YES
CT	Children between (6-12) ****Uninfused	NO	YES****	YES****
CT	Infants - Uninfused ****	NO	NO	YES****
CT	Infants - Infused ****	NO	NO	YES****

<b>NOTES</b>			204-623-9246	204-778-1586
	**** depending on the tech and the procedure, sometimes they feel it's best in WPG – Please call ahead for confirmation of testing			
Scope	Test	FF	TP	TM
Fluoroscopy	Hysterosalpingogram	NO	YES	YES
Fluoroscopy	Colon Enema	NO	NO	YES
Fluoroscopy	Central Line Placement	NO	NO	NO
Fluoroscopy	Chest	NO	NO	YES
Fluoroscopy	Cystogram	NO	NO	NO
Fluoroscopy	Esophagus	NO	NO	YES
Fluoroscopy	Foreign Body Localization	NO	NO	YES
Fluoroscopy	Small Bowel Series	NO	NO	YES
Fluoroscopy	Sinogram	NO	NO	NO
Fluoroscopy	Stomach and Duodenum	NO	NO	YES
Fluoroscopy	Swallowing Study	NO	NO	YES
Fluoroscopy	Gastrostomy, Percutaneous	NO	NO	YES
<b>NOTES</b>				
	***q 6 MO - radiology in Thompson about 2 times per year for fluoroscopy			
Other	Test	FF	TP	TM
Cardiac	EKG	YES	YES	YES
Cardiac	Stress Testing	NO	YES	YES
Cardiac	Holter Monitoring	YES	YES	YES
Cardiac	Event Monitoring	NO	YES	YES
Cardiac	24 Hour Blood Pressure Monitoring	NO	NO	YES
Cardiac	Ankle - Brachial Pressure Indices	NO	NO	YES
Respiratory	Test	FF	TP	TM
Respiratory	Spirometry	YES	YES	YES
Respiratory	Flow Volumes	YES	NO	YES
Respiratory	Lung Volumes	NO	NO	YES
Respiratory	Diffusing Capacity	NO	NO	YES
Respiratory	Maximum Inspiratory & Expiratory Pressures (MIP/MEP)	NO	YES	YES
Respiratory	Single Breath Nitrogen Washout	NO	NO	YES
Respiratory	Arterial Blood Gas on Room Air	YES	YES	YES
Respiratory	Arterial Blood Gas on O2 (Oxygen)	YES	YES	YES
Respiratory	Steady State Gas Exchange on Room Air at Rest	NO	NO	NO
Respiratory	Calculation of Shunt on 100% Oxygen	NO	NO	NO
Respiratory	Walking Oximetry on Room Air	YES	YES	YES
Respiratory	Walking Oximetry on O2 (Oxygen)	YES	YES	YES
Respiratory	Overnight Oximetry	YES	YES	YES
Respiratory	Progressive Cardiopulmonary Exercise Testing	NO	NO	NO





Respiratory	Asthma Challenge: Methacholine	NO	NO	NO
Respiratory	Asthma Challenge: Cold Air	NO	NO	NO
Respiratory	Asthma Challenge: Post Exercise	NO	NO	NO



# Contact Information for NPTP Program:

**For ANY OPERATIONAL QUESTIONS OR CONCERNS CONTACT:**

April Rose  
Regional Manager, Northern Patient Transportation Program  
Telephone: (204) 778-1512  
Cell: (204) 679-7794  
Email: [arose2@nrha.ca](mailto:arose2@nrha.ca)

**For ANY CLINICAL QUESTIONS OR CONCERNS CONTACT:**

Laurel Queen, LPN  
Patient Care Coordinator, Northern Patient Transportation Program  
Telephone: (204) 778-1598  
Cell: (204) 271-3594  
Email: [lqueen@nrha.ca](mailto:lqueen@nrha.ca)



# Index of Specialists & Services

(FF – Flin Flon, TP – The Pas, TM – Thompson)

Aboulhoda, Alaa – General Surgery TP .....	11
Schoeman, Corne – General Surgery TM .....	13
Steigerwald, Sarah – General Surgery Locum TM .....	15
Essery, Cameron – General Surgery Locum TM .....	17
Chernos, Courtney – General Surgery Locum TM .....	19
Rana, Mariam – General Surgery Locum TM .....	21
Lipson, Mark – General Surgery TM .....	23
Reimer, David – General Surgery TM FF .....	25
Dale, Ryan – General Surgery TM .....	27
Choi, ?? – General Surgery TM .....	29
Jackson, Andora – Obstetrics & Gynecology TP .....	32
AlMoumen, Zakaraia – Obstetrics & Gynecology TP .....	35
Azzam, Lina – Obstetrics & Gynecology TM .....	38
Mustafa, Arjowan – Obstetrics & Gynecology TM .....	41
Azzam, Hussam – Obstetrics & Gynecology TM .....	44
Tassi, Hisham, Internal Medicine TM .....	48
Abou-Khamis, Rami – Internal Medicine/Endoscopy TM .....	50
Ramadan, Abdul-Nasser – Internal Medicine Locum TM .....	52
Kostyk, Richard – Internal Medicine TP .....	54
Baker, Chandran – Chronic Pain Management TM .....	57
Intrater, Howard – Chronic Pain Management TM .....	59
Anid, Gabriel – Otolaryngology TM .....	62
Krocjak, Tad – Urology FF .....	64
Singh, Ramandip - Rheumatology TM .....	66
Jackson, Alan – Neurology TM .....	68

Willoughby, Joanne - Dermatology TM – on hold due to Covid-19 .....	70
Adeyemi, Moyo – Paediatrics TM .....	72
Dawyduk, Brenda NP – Paediatrics TM FF .....	73
Bowes, Carla – Paediatrics TM TP.....	74
Sellers, E – Paediatric Endocrinology TM .....	75
Dart, Allison – Paediatric Nephrology TM.....	76
Buffo, Ilan – Paediatric Cardiology TM.....	77
Hamam, Alwalid – Orthopedic Surgery TM TP .....	79
Birt, Doug – Orthopedic Surgery TM .....	81
Diagnostic Services of Manitoba .....	84
NPTP Contact Information .....	94



## **Vision**

Healthy People; Healthy North

## **Mission**

The Northern Health Region is dedicated to providing quality, accessible and compassionate health services

## **Values**

<b>Trust</b>	We are honest and reliable in fulfilling our commitments
<b>Respect</b>	We treat people and organizations with dignity and consideration
<b>Integrity</b>	Our beliefs, behaviorism, words and actions are honestly, ethically and morally aligned
<b>Compassion</b>	Our interactions are rooted in empathy and sensitivity
<b>Collaboration</b>	We work with others to enhance service delivery and maximize resources.

## **Strategic Directions**

Improve Population Health  
Deliver Accessible, Quality Health Services  
Be a Sustainable & Innovative Organization  
Be an Employer of Choice